

# 2-DAY AUCTION

## LIVE VIA WEBCAST & ONLINE



CINCINNATI DE-340-20 TWIN GRIP CENTERLESS GRINDER

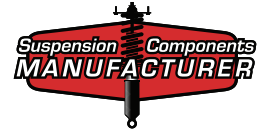
**2012 CRI REBUILD**



**0.25"–1.5" CAP.**

MEECO HD0 2-ROLL 2-MOTOR BAR STRAIGHTENERS

Over 1,000 Lots – Cincinnati Centerless Grinders, Supfina Super Finishers, Meeco Bar Straighteners, Bar Heat Treat/Tempering Lines, Bruderer Hi-Speed Press, Okuma Turning Centers, Acme Gridley & Gildemeister Bar Machines, Vaughn Draw Bench, Wheelabrator 4 Vane Shot Blast, Metallurgical Lab, Plating Line, Paint Line, (19) Forklifts, Machine Shop, Factory Support Equipment



**MANUFACTURER OF AUTOMOTIVE STRUT & SHOCK ABSORBER RIDE COMPONENTS**

**LIVE WEBCAST AUCTION**

**Day 1 Sale Date:**  
Tuesday, August 25  
at 9:00 AM ET

**ONLINE AUCTION**

**Day 2 Lots Closing From:**  
Wednesday, August 26  
at 9:00 AM ET



**1,000'S OF FEET**

COPPER CABLE

*Pre-Auction Offers Invited on Major Assets*

**Location:** 1800 17th Street East, Owen Sound, ON N4K 5Z9 Canada

**Inspection:** Monday, August 24 from 8:30 AM to 4:30 PM ET or By Appointment



**PERFECTION Industrial Sales**

Perfection Industrial Sales  
ph +1-847-545-6374 • fax +1-847-427-8884  
[www.perfectionindustrial.com](http://www.perfectionindustrial.com)

In Conjunction with:



**TCL Asset Group Inc.**

[www.managingyourassets.com](http://www.managingyourassets.com)

ph +1-905-660-1367

Bidding Available Through **BidSpotter.com**



Powered by AllSurplus

[www.go-dove.com](http://www.go-dove.com)

ph +1-202-467-6868



# (11) GRINDERS, (4) SUPERFINISHERS & (4) BAR STRAIGHTENERS



**1999**

## (11) GRINDERS, (4) SUPERFINISHERS & (4) BAR STRAIGHTENERS

**2012 CINCINNATI DE-340-20 TWIN GRIP CENTERLESS GRINDER**, 2012 Centerless Rebuilders Inc. Rebuild, s/n 77-0058, w/CRI EZ Touch Control

**(3) 1999 LANDIS CINCINNATI RK SERIES 350-20 TWIN GRIP CENTERLESS GRINDERS**, s/n HK-31012, HK-31010, HK-31009

**(3) CINCINNATI AE-340-20 TWIN GRIP CENTERLESS GRINDERS**, Rebuilt by CRI, s/n 3505V79-11, 3505V79-07, 3505V79-0006

**(4) CINCINNATI NO. 3 TWIN GRIP CENTERLESS GRINDERS**, s/n 3566A0186-0010, 3566A0186-0006, 3566A0186-0001, 3566A0185-0029

**(3) SUPFINA SM464 SUPERFINISHERS**, new as 2011, s/n 300.808. 300.648, 300.579, w/(8) Independent Adjustable Polishing Heads

**SUPFINA SM 460 SUPERFINISHER**, s/n 300.657, w/(8) Independent Adjustable Polishing Heads

**(4) CONTROL GAGING INC. E-S10P GRINDER GAGE CONTROLS**

**MEECO HD1 2-ROLL 2-MOTOR BAR STRAIGHTENER**, s/n J355, Rebuild AV8866, w/1/2" to 2-1/2" Bar Cap., Twin 30 HP Motors

**(3) MEECO HD0 2-ROLL 2-MOTOR BAR STRAIGHTENERS**, s/n AL-2400, AL-2221, NA, w/1/4" to 1-1/2" Bar Cap., Twin 25 HP Motors

**HYDRO FLOW HVF-36B COOLANT FILTRATION SYSTEM**, s/n 97455, w/3,200 GPM, 1,750-Gallon Filter Tank, 850-Gallon Clean Tank, Koolant Koolers SAR-25,000-P-CL-SW-M-SI Chiller, s/n 11077 (Sold Separately)

**HENRY 1200 SEP COOLANT FILTRATION SYSTEM**, s/n 3962, w/Koolant Koolers SAR-60,000-SP-CL-SW-R407C-M Chiller, s/n 18770 (Sold Separately)

LANDIS CINCINNATI RK SERIES 350-20 TWIN GRIP CENTERLESS GRINDER



**3 AVAILABLE**

(2) LANDIS CINCINNATI RK SERIES 350-20 TWIN GRIP CENTERLESS GRINDERS

## Auction Conducted in U.S. Funds (USD)



HENRY 1200 SEP COOLANT FILTRATION SYSTEM



CINCINNATI GRINDING STONES



CINCINNATI SPINDLES

HYDRO FLOW HVF-36B COOLANT FILTRATION SYSTEM



**3,200 GPM**





(1 OF 3) CINCINNATI AE-340-20 TWIN GRIP CENTERLESS GRINDERS



(1 OF 3) CINCINNATI NO 3 TWIN GRIP CENTERLESS GRINDER

**Day 1 : Tues., Aug. 25 at 9:00 AM**



(1 OF 3) CINCINNATI NO 3 TWIN GRIP CENTERLESS GRINDER

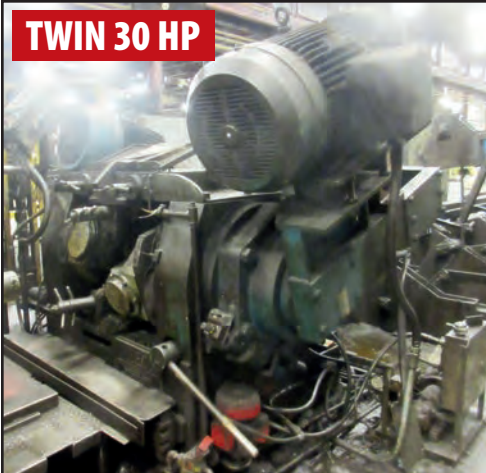
**LIVE  
WEBCAST  
AUCTION**

**Inspection:  
Monday,  
August 24  
from  
8:30 AM to  
4:30 PM ET  
or By  
Appointment**



(1 OF 4) SUPFINA SM464 SUPERFINISHERS

**2011**



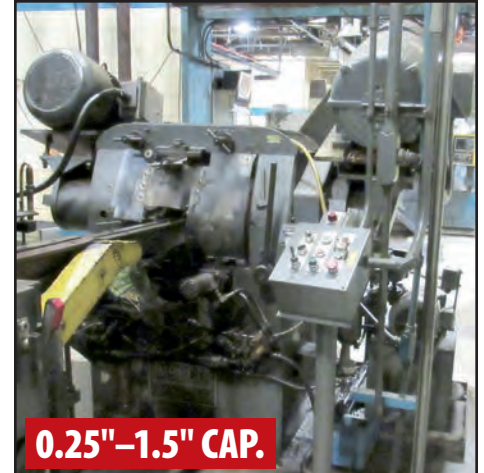
**TWIN 30 HP**

MEECO HD1 2-ROLL 2-MOTOR BAR STRAIGHTENER



**3 AVAILABLE**

MEECO HD0 2-ROLL 2-MOTOR BAR STRAIGHTENERS



**0.25"-1.5" CAP.**

MEECO HD0 2-ROLL 2-MOTOR BAR STRAIGHTENERS

View our current auction schedule at [www.perfectionindustrial.com](http://www.perfectionindustrial.com)

To discuss your requirements for an auction, please call Perfection Industrial +1-847-545-6374

There will be no onsite participation in this Webcast-only auction. All bidders will be able to place live, real-time bids using a desktop or mobile device (the exact same way Webcast bidders have participated in previous sales) and can listen live in real-time to the auctioneer's audio stream.



# METAL PREP & FINISH



**150 HP DC DRIVE**

VAUGHN 50,000 LB SINGLE/DOUBLE DRAW BENCH

## METAL PREP & FINISH

**VAUGHN 50,000 LB. SINGLE/DOUBLE DRAW BENCH**, w/150 HP Motor/Reliance MaxPak III DC Drive, 37' Bench

**WHEELABRATOR 4W/A BAR STOCK SHOT BLAST MACHINE**, s/n A-121227, w/(3) 25-RLM-195 30 HP Vanes, 1/2" Manganese Blast Chamber, US Filter 4SPSC12 Dust Collector, s/n 2187

**(3) TOCCO ROLL THROUGH BAR HEAT TREAT/TEMPERING LINES**, w/Tocotron 5EA 150 kW RF Generator, Inductron 100-3T-02 100 kW Tempering Unit, Auto Blank Bar Loader, Satellite Washer, 20 SFPM Line Speed, Spot or Continuous Function, Copper Water Cooled Coils, Chiller

**(2) PIFCO SR1987 GAS FIRED STRESS RELIEF OVENS**, s/n 7522, 6663, w/Up to 600 Deg.

**(2) UDYLITE CHROME PLATING LINES**, w/(2) Thyristor Devices Ltd 6P-F 24,000 Amp Rectifiers, Transfer Hoist, Cleaning, Reverse Etch and Plating Tanks

**(2) UDYLITE CHROME PLATING LINES**, w/(2) North American Rectifier 6PF-F 12,000 Amp Rectifiers, Udylite 1,000 Amp Sealed Automatic Solid-State Converter, Transfer Hoist, Cleaning, Reverse Etch and Plating Tanks

**ECO-TECH DC20A CHROMIC ACID PURIFICATION UNIT**

**2008 DUALL HMF-74 SCRUBBER**

**HEXMASTER SCRUBBER**

## LIVE WEBCAST AUCTION

**Day 1 Sale Date: Tuesday, August 25 at 9:00 AM ET**



WHEELABRATOR 4 W/A BAR STOCK SHOT BLAST MACHINE

**(3) 30 HP VANES**

TOCCO ROLL THROUGH BAR HEAT TREAT/TEMPERING LINES



**3 AVAILABLE**



**3 AVAILABLE**

TOCCOTRON 5EA 150 KW RF GENERATOR



**3 AVAILABLE**

INDUCTRON 100-3T-02 100 KW TEMPERING UNIT



**3 AVAILABLE**

VIEW OF TOCCO POWER AND CHILLING UNITS



**12,000 AMP**

(1 OF 2) UDYLITE 12,000 AMP CHROME PLATING LINES



**600 DEG**

(2) PIFCO SR1987 GAS FIRED STRESS RELIEF OVENS



**24,000 AMP**

(1 OF 2) UDYLITE 24,000 AMP CHROME PLATING LINES



# METAL PREP & FINISH, TURNING CENTERS & AUTOMATICS

## (2) EVAPCO COOLING TOWERS

**BARRETT 1100-E EXTRACTOR CENTRIFUGE**, s/n 110122-SE

**BARRETT 402-E EXTRACTOR CENTRIFUGE**, s/n 4021648-E

**BARRETT 225F CLARIFUGE CENTRIFUGE**, s/n 2250097-E

**BEM BASKET TYPE ULTRASONIC WASHER**

**HOBART TUNNEL TYPE WASHER**

**PAINT SYSTEM W/RANSBURG ELC-D-36019-500 ELECTROSTATIC PAINT SYSTEM (UPDATED 2014 PAK CONTROL)**, Tek-Mor 7-Stage Iron Phosphate Wash, Geo Koch Dry-Off/Bake Ovens, Approx. 2,000' Chain Conveyor

**2017 WATTS WATER TECH R24 RO SYSTEM**, s/n 12-28-2017

**CONTROLLED PYROLYSIS PRC-150 BURN-OFF OVEN**, s/n PRL1504224

## TURNING CENTERS & AUTOMATICS

**OKUMA LT15-M TWIN SPINDLE TURNING CENTER**, s/n 07030081

(13) **OKUMA LB10M AND LB10 TURNING CENTERS**, s/n Available in Catalog, w/Bar feed

(3) **GILDEMEISTER AA32M-8 AUTO BAR MACHINES**, s/n 35248, 34242, 35237, w/8-Spindle, Bar Feed

(3) **GILDEMEISTER AA32M-6 AUTO BAR MACHINES**, s/n 35247, 35241, 35238, 6-Spindle, Bar Feed

**ACME GRIDLEY RA6 1.25" 6-SPINDLE AUTO BAR MACHINE**, w/Allen Bradley Panelview 550 Control, Bar Feed

**ACME GRIDLEY RA8 1.25" 8-SPINDLE AUTO BAR MACHINE**, w/Allen Bradley Panelview 550 Control, Bar Feed

There will be no onsite participation in this Webcast-only auction. All bidders will be able to place live, real-time bids using a desktop or mobile device (the exact same way Webcast bidders have participated in previous sales) and can listen live in real-time to the auctioneer's audio stream.



BEM BASKET TYPE ULTRASONIC WASHER



HOBART TUNNEL TYPE WASHER



(2) EVAPCO COOLING TOWERS



(2) NORTH AMERICAN RECTIFIER 6PF-F 12,000 AMP RECTIFIERS



BARRETT 1100-E EXTRACTOR CENTRIFUGE



WATTS WATER TECH R24 RO SYSTEM



RANSBURG ELC-D-36019-500 ELECTROSTATIC PAINT SYSTEM



HEXMASTER SCRUBBER



TEK-MOR 7-STAGE IRON PHOSPHATE WASH



OKUMA LT15-M TWIN-SPINDLE TURNING CENTER



GILDEMEISTER AA32M-6 AUTO BAR MACHINES



GILDEMEISTER AA32M-8 AUTO BAR MACHINES



# MISC. MACHINERY & MACHINE SHOP, LARGE COPPER SALVAGE/SCRAP OPPORTUNITY

## LIVE WEBCAST AUCTION

**Day 1  
Sale Date:  
Tuesday,  
August 25  
at 9:00 AM ET**



BRUDERER BSTA 30II 30-TON HI-SPEED PRESS



2004 HARRISON ALPHA 1400 CNC LATHE



2 AVAILABLE FH FX-110 360 DEG. ROBOTIC WELDERS



STANDARD MODERN 19/80 19" X 80" ENGINE LATHE

### MISCELLANEOUS MACHINERY & MACHINE SHOP

BRUDERER BSTA 30II 30-TON HI-SPEED PRESS, s/n RU2048; BLISS C-110 OBI PRESS, s/n H-66571; (2) FH FX-110 360 DEG ROBOTIC WELDERS, w/Miller Invision 456P Mig Welder, Miller Automatic M Microprocessor Weld Control, Miller Coolmate 3 Chiller; MITCHELL MONOTUBE COLD FORMING MACHINE, s/n PP-579, w/48" Stk, 56mm Max. OD, 32mm Min. OD; 2004 HARRISON ALPHA 1400 CNC LATHE, s/n H7T087; STANDARD MODERN 19/80 19" X 80" ENGINE LATHE, s/n 7961; (2) STANDARD MODERN 15/54 15" X 54" ENGINE LATHES, s/n 8104 (w/Taper Attachment), s/n 8102; HARDINGE HLV-H PRECISION LATHE, s/n KLD-8220; CINCINNATI MILACRON 2MK UNIVERSAL MILL, s/n 13J23UIABE-31; TECHLEADER 3VF 3 HP MILL, s/n 6744; BRIDGEPORT 2 HP MILL, s/n 167033, w/Power Table; GRAND RAPIDS NO. 350 HYDRAULIC SURFACE GRINDER, s/n 350500, w/8" x 24" Mag. Chuck; CINCINNATI NO. 2 TOOL AND CUTTER GRINDER, s/n 1D2F1AAF-229; KITCHEN & WADE E32 MARK II 12/54 RADIAL ARM DRILL; WILSON 2450S GEARED HEAD DRILL PRESS, w/Power Quill Feed; HYDRABEND 2.5M X 3MM HYDRAULIC PRESS BRAKE; DOALL 2612-H VERTICAL BANDSAW, s/n 284-75200; HAMMOND VH600-D-B 6" ABRASIVE BELT GRINDER, s/n 1010; DAKE 5-151 150-TON HYDRAULIC SHOP PRESS, s/n 170852; **ALSO: LARGE SELECTION OF VISES, CLAMPING HARDWARE, ROTARY TABLES, MAG CHUCKS, PERISHABLE TOOLING**



HARDINGE HLV-H PRECISION LATHE



MITCHELL MONOTUBE COLD FORMING MACHINE



BRIDGEPORT 2 HP MILL



KITCHEN & WADE E32 MARK II 12/54 RADIAL ARM DRILL



CINCINNATI MILACRON 2MK UNIVERSAL MILL



GRAND RAPIDS NO. 350 HYDRAULIC SURFACE GRINDER



2019 NBE GAYLORD TIPPER (NEW NEVER USED)

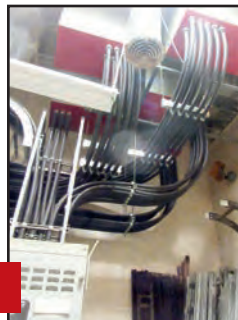
To discuss your requirements for an auction, please call Perfection Industrial +1-847-545-6374

## ONLINE AUCTION

**Day 2 Lots Closing From:  
Wednesday, August 26  
at 9:00 AM ET**

### LARGE COPPER SALVAGE/SCRAP OPPORTUNITY

THOUSANDS OF FEET OF COPPER WIRE AND BAR; **ALSO: SWITCH GEAR, MOTOR CONTROLS, TRANSFORMERS, BUS BAR, ETC.**



1,000'S OF FEET  
COPPER CABLE



100'S OF FEET  
COPPER BAR

COPPER BAR

Auction Conducted in U.S. Funds (USD)

View our current auction schedule at [www.perfectionindustrial.com](http://www.perfectionindustrial.com)



## ONLINE AUCTION

**Day 2 Lots Closing From:**  
**Wednesday, August 26 at 9:00 AM ET**



**19 AVAILABLE**

VIEW OF FORKLIFTS NEW AS 2014, UP TO 5,000 LB



SCISSOR LIFTS



TENNANT  
M20  
ELECTRIC  
SWEEPER/  
SCRUBBER

**2013**

O'BRIEN  
1-TON FREE  
STANDING JIB



OPTICAL COMPARATORS

## METALLURGICAL & QA DEPARTMENTS

STRUERS DISCOTOM PRECISION CUT-OFF  
 LECO AP-200 AUTOMATIC POLISHER  
 LECO PR-25 MOUNTING PRESS  
 ARL FISON 3460 AES SPECTROMETER

**ALSO:** PARTICLE INSPECTION, MITUTOYO OPTICAL COMPARATORS, CMM, HARDNESS TESTERS, HEIGHT GAGES, PIN GAGES, MICROMETERS, VERNIERS, BORE GAUGES, HEIGHT GAUGES, CALIPERS AND MUCH MORE

## FACTORY SUPPORT, ROLLING STOCK & STORES

ONAN 50.0 DDB-15R/9134 A 50 KW GENERATOR, s/n 0275927173, w/John Deere 6-Cycle Diesel

2013 TENNANT M20 ELECTRIC SWEEPER/SCRUBBER, s/n M20-6016

2004 SKYJACK 4626 PLATFORM SCISSOR LIFT, s/n 701188

SNORKEL SL20 PLATFORM SCISSOR LIFT

(19) CATERPILLAR, HYSTER, YALE, CROWN & RAYMOND ELECTRIC FORKLIFTS, New as 2014, Up to 5,000 Lb Cap., Specs and s/n in Lot Catalog

(12) CROWN AND ECONO LIFT ELECTRIC PALLET JACKS, Specs and s/n in Lot Catalog  
 TILT-A-LIFT S15A 15,000 LB HYDRAULIC FORKLIFT REPAIR LIFT

**ALSO:** LISTA CABINETS AND WORK BENCHES, STRONGHOLD CABINETS, CELCO CONTROLS, MOTORS, GEAR BOXES, GEAR REDUCERS, FUSES, ELECTRICAL COMPONENTS AND PARTS, BEARINGS, STAINLESS STEEL HARDWARE AND FITTINGS, CONSUMABLE PARTS AND SUPPLIES, GOLF CART, DUMPING SCRAP HOPPERS, HAND TRUCKS AND CARTS, PALLET RACKING, LADDERS, LIFT CARTS, SHOP CARTS, PALLET JACKS, SAFETY LADDERS, POWER TOOLS, HAND TOOLS, MAINTENANCE DEPARTMENT, WELDING, TORCH, INDUSTRIAL VACS, SHOP VACS, DIE CARTS, OFFICE, FLAT SCREEN TVS, CAFETERIA AND MUCH MORE.



VIEW OF CONSUMABLES



SPARE MOTORS AND PARTS



VIEW OF CONSUMABLES



SPARE MOTORS AND PARTS



**15,000 CAP.**

TILT-A-LIFT S15A 15,000 LB HYDRAULIC FORKLIFT REPAIR LIFT



SUPPORT EQUIPMENT



**5-TON**

SPREADER BAR



POWER TOOLS



POWER AND HAND TOOLS



INSPECTION TOOLS



WELDERS AND SUPPORT EQUIPMENT



CARBIDE TOOLING AND INSERTS



SUPPORT EQUIPMENT



CARBIDE TOOLING AND INSERTS



SUPPORT EQUIPMENT



TOOL CHEST AND SUPPORT EQUIPMENT

**Location:** 1800 17th Street East, Owen Sound, ON N4K 5Z9 Canada  
**Inspection:** Monday, August 24 from 8:30 AM to 4:30 PM ET or By Appointment



**PERFECTION Industrial Sales**

Perfection Industrial Sales – 2550 Arthur Ave., Elk Grove Village, IL 60007

Phone: +1-847-545-6374 – Fax: +1-847-427-8884

[www.perfectionindustrial.com](http://www.perfectionindustrial.com)



Presorted  
First Class Mail  
U.S. Postage  
PAID  
Eugene, Oregon  
Permit No. 17

# 2-DAY AUCTION LIVE VIA WEBCAST & ONLINE

**MANUFACTURER OF  
AUTOMOTIVE STRUT & SHOCK  
ABSORBER RIDE COMPONENTS**

**Day 1 Sale Date:**

**Tuesday, August 25 at 9:00 AM ET**

**Day 2 Lots Closing From:**

**Wednesday, August 26 at 9:00 AM ET**

**Location:** 1800 17th Street East,  
Owen Sound, ON N4K 5Z9 Canada

**Inspection:** Mon., August 24 from 8:30 AM  
to 4:30 PM ET or By Appointment

# 2-DAY AUCTION LIVE VIA WEBCAST & ONLINE

**REMOVAL**

Smaller, hand-carry lots must be removed by Friday, August 28. Large assets must be re-moved no later than Friday, September 11. All removal is strictly on an appointment only basis. Anyone removing purchased items with a lift truck or another powered vehicle must have a certificate of insurance with a \$2M General Liability policy, and that certificate must be provided to the auctioneer for review and approval prior to the auction.

**TERMS OF SALE**

The auctions are conducted in US Funds (USD). An 18% Buyer's Premium will be charged on all assets purchased by buyers providing full payment is made within 48 hours following the sale. Acceptable forms of payment are cashier's check, company check (with bank letter of guarantee) or wire transfer within 48 hours of the sale close. For any Buyers failing to pay within the 48 hour stated payment period, the Buyer's Premium will be increased to 21%. Everything will be sold to the highest bidder, in accordance with the Auctioneer's customary "Terms of Sale", copies of which will be posted on the Auctioneer's website and subject to additional terms announced the day of sale. All items are sold "As is, Where is" without any warranty, express or implied.

**PAYMENT**

ALL PURCHASES MUST BE PAID WITHIN 48 HOURS OF THE CLOSE OF SALE. Contact our Accounting team for wire instructions. Only wire transfer or certified check, payable to Perfection Industrial Sales will be accepted. Company checks payable to Perfection Industrial Sales will be accepted only if accompanied by a bank letter of guarantee. All sales are subject to sales tax. Purchasers claiming Sales Tax exemptions must provide proof satisfactory to the Perfection Accounting team to claim such exemptions.

**FOR FURTHER INFORMATION**

For further information, contact Jennifer Reiner at +1-847-545-6374 or [jennifer@perfectionindustrial.com](mailto:jennifer@perfectionindustrial.com).

*Pre-Auction Offers Invited  
on Major Assets*

**Auction Conducted in  
U.S. Funds (USD)**

**Day 1 Sale Date:**

**Tuesday, August 25 at 9:00 AM ET**

**Day 2 Lots Closing From:**

**Wednesday, August 26 at 9:00 AM ET**

**Location:** 1800 17th Street East, Owen Sound, ON N4K 5Z9 Canada

**Inspection:** Monday, August 24 from 8:30 AM to 4:30 PM ET or By Appointment



**PERFECTION Industrial Sales**

Perfection Industrial Sales  
ph +1-847-545-6374 • fax +1-847-427-8884  
[www.perfectionindustrial.com](http://www.perfectionindustrial.com)



In Conjunction with:

**TCL Asset Group Inc.**

[www.managingyourassets.com](http://www.managingyourassets.com)

ph +1-905-660-1367

Bidding Available Through **BidSpotter.com**



Powered by AllSurplus

[www.go-dove.com](http://www.go-dove.com)

ph +1-202-467-6868