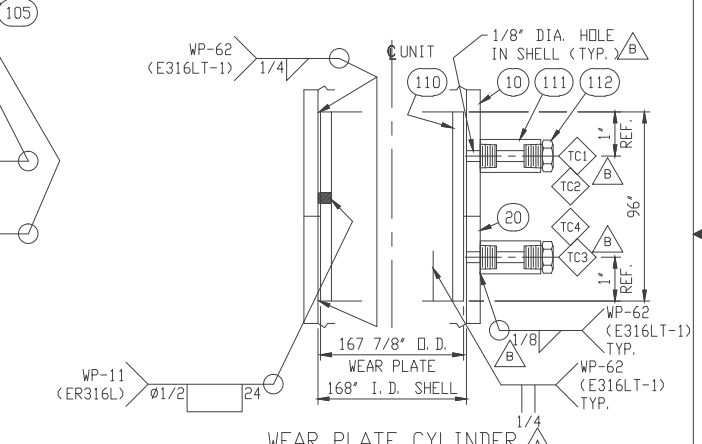


Parts List				
ITEM	NAME	QTY	DESCRIPTION	MATERIAL
10	SHELL	1	5/16" x 528 3/4" x 120" (ROLL TO 168" I.D.)	SA-240-316/L
20	SHELL	1	5/16" x 528 3/4" x 120" (ROLL TO 168" I.D.)	SA-240-316/L
101	TOP HEAD	1	2:1 S.E. HEAD, 1/4" (0.1875" MIN.) x 72" I.D. c/w 1 1/2" S.F.	SA-240-316/L
102	TOP SHELL	1	1/4" x 227" x 74" (ROLL TO 72" I.D.)	SA-240-316/L
103	TOP CONE	1	3/8" x 168.220" MEAN DIA. x 72.720" MEAN DIA. x 34.692" MEAN HT.	SA-240-316/L
104	BOTTOM CONE UPPER COURSE	1	3/8" x 168.325" MEAN DIA. x 85.186" MEAN DIA. x 72" MEAN HT.	SA-240-316/L
105	BOTTOM CONE MIDDLE COURSE	1	3/8" x 85.186" MEAN DIA. x 39.0" MEAN DIA. x 40.0" MEAN HT.	SA-240-316/L
106	STIFFENING RING	1	3/8" x 80 1/2" D.D. x 72 5/8" I.D.	SA-240-316/L
107	STIFFENING RING	1	1/2" x 178 5/8" D.D. x 168 3/4" I.D.	SA-240-316/L
108	STIFFENING RING	4	1/2" x 177 5/8" D.D. x 168 3/4" I.D.	SA-240-316/L
109	STIFFENING RING	1	3/8" x 92 7/8" D.D. x 86 5/8" I.D.	SA-240-316/L
110	WEAR PLATE CYLINDER	1	1/4" x 526 5/8" x 96" (ROLL TO 167 7/8" D.D.)	SA-240-316/L
111	*TC1, TC2, TC3, TC4* COUPLING	4	1/4" - CLASS 3000, B16.11 NPT FULL COUPLING	SA-182-F316/L
112	*TC1, TC2, TC3, TC4* PLUG	4	1/4" - B16.11 NPT HEX. PLUG	SA-182-F316/L
113	BOTTOM CONE LOWER COURSE	1	3/8" x 39.0" MEAN DIA. x 2.950" MEAN DIA. x 31.220" MEAN HT.	SA-240-316/L

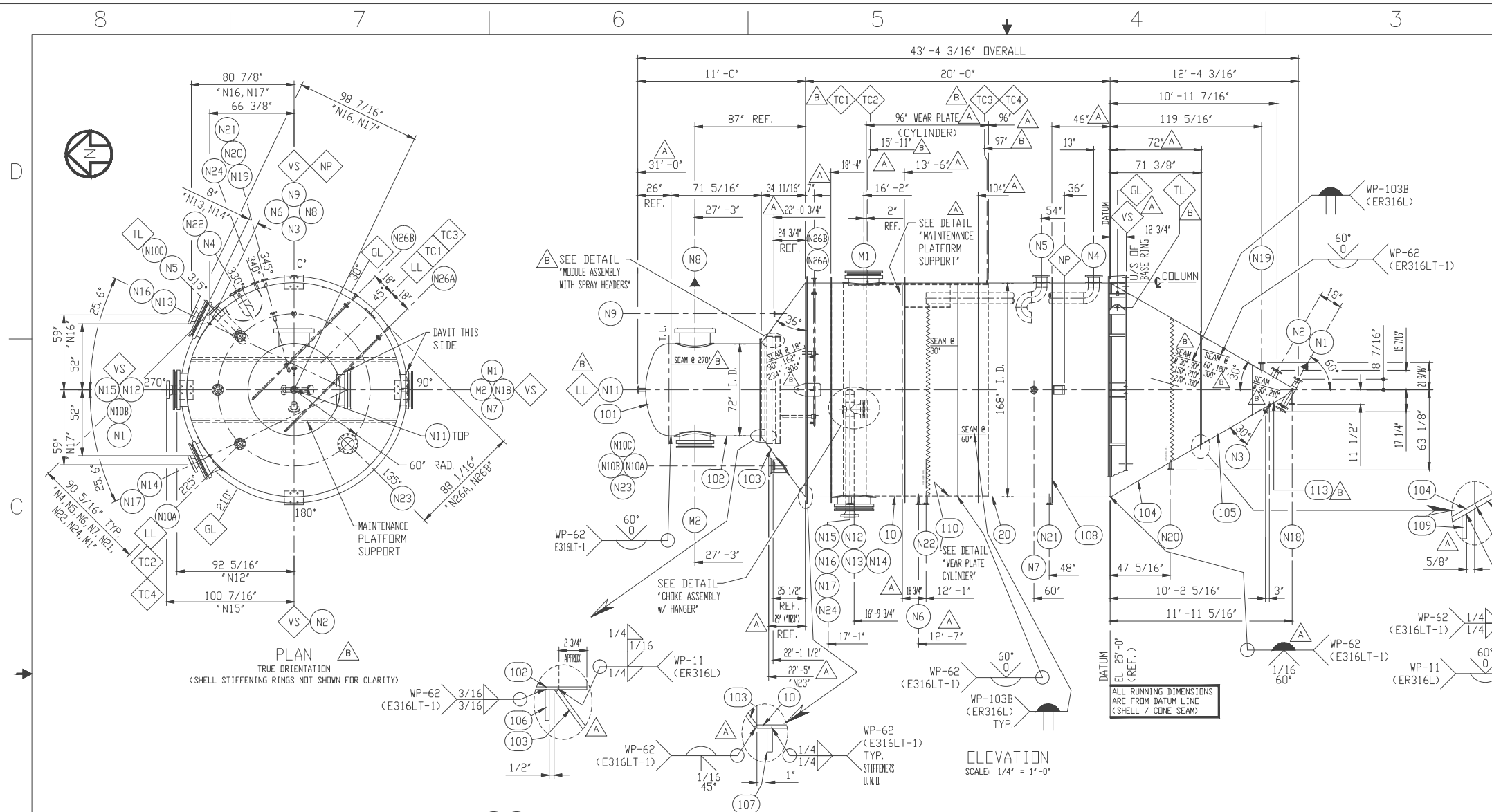
316/L = DUAL CERTIFICATION REQUIRED



WEAR PLATE CYLINDER
ALSO SEE DETAIL NOZZ. *N12, N13, N14, N22 & M1* FOR NOTCHING WEAR PLATE

CERTIFIED FOR CONSTRUCTION
DATE: 09/16/08
SIGNED:

B	09/16/08	B.I.P.	AS PER CUSTOMER MARK-UP 08/28/08, 09/09/08 & 09/15/08 / AS NOTED / CERTIFIED FOR CONSTRUCTION
A	05/28/08	B.I.P.	AS PER CUSTOMER MARK-UP 05/21/08 & E-MAIL 05/22/08 / AS NOTED / ISSUED FOR FINAL REVIEW
REVISIONS			
CUSTOMER PURCHASE ORDER No.: E3677-M315		THIS DRAWING IS COPYRIGHTED AND IS THE PROPERTY OF ELLETT INDUSTRIES LTD.. THE INFORMATION THEREIN MAY NOT BE USED, LENT, NOR REPRODUCED WITHOUT WRITTEN PERMISSION.	
SHERITT INTERNATIONAL CORP. PROJECT: ME 164 EXPANSION FORT SASKATCHEWAN, ALBERTA, CANADA		72" / 168" I.D. #4 FLASH TANK EQUIPMENT No. : 2-VE-095	
ELLETT Industries Ltd. - Port Coquitlam, B.C.			
ELLETT JOB No.	DRAWN: B. I. P.	DATE: 04/28/08	SCALE: N. T. S.
43916	CHECKED: A. S. K.	DATE: 07/01/08	DRAWING NUMBER: N4-191-1
	APPROVED:	DATE:	SHEET 1 OF 6



MK.	SIZE	NO.	RTG	TYPE	SERVICE	REMARKS	P	Ve	VL	Mc	Ml	Mr
SCHEDULE OF NOZZLES							FORCES [LBS.]	MOMENTS [LBS.-FT.]				
M2	24"	1	SPEC.	RFSD	MANWAY	c/w BLIND & DAVIT						
M1	24"	1	SPEC.	RFSD	MANWAY	c/w BLIND & DAVIT						
N26A, N26B	1"	2	150	RFWN	SPRAY	-						
N24	2"	1	150	RFSD	PT	c/w BLIND						
N23	10"	1	125	FFSD	PV BREATHER	-						
N22	1 1/2"	1	150	RFSD	LSHH	c/w BLIND						
N21	1 1/2"	1	150	RFSD	LSH	c/w BLIND						
N20	1 1/2"	1	150	RFSD	LSL	c/w BLIND						
N19	1 1/2"	1	150	RFSD	LSLL	c/w BLIND						
N18	1"	1	150	RFSD	FLUSH	-						
N17	6"	1	600	RFWN	SLURRY IN	INSERT						
N16	6"	1	600	RFWN	SLURRY IN	INSERT, c/w BLIND						
N15	6"	1	600	RFWN	SLURRY IN	INSERT						
N14	26"	1	-	SPEC.	DISCHARGE PIPE OPENING	c/w INSERT *N17*						
N13	26"	1	-	SPEC.	DISCHARGE PIPE OPENING	c/w INSERT *N16*						
N12	26"	1	-	SPEC.	DISCHARGE PIPE OPENING	c/w INSERT *N15*						
N11	2"	1	150	RFSD	PT	c/w BLIND						
N9A, N10A, N10C	4"	3	150	RFSD	VENT GAS	c/w BLIND						
N9	1"	1	150	RFSD	NITROGEN	c/w BLIND						
N8	24"	1	150	RFSD	VAPOUR DUT	-						
N7	2"	1	150	RFSD	SPARE	c/w BLIND						
N6	1"	1	150	RFWN	35# STEAM	-						
N5	8"	1	150	RFSD	DECANT	-						
N4	8"	1	150	RFSD	OVERFLOW	-						
N3	1"	1	150	RFSD	WASH WATER	-						
N2	4"	1	150	RFSD	SPARE	c/w BLIND						
N1	3"	1	150	RFWN	DISCHARGE	-						

DESIGN AND FABRICATION
In general accordance with 1) ASME Section VIII, Div. 1, 2007 Edition
2) Customer's Specification: 253-MA-170-00-001-R1
253-MA-104-00-001-R1
253-MA-105-00-105-R2
DWG. ME-570-00-030
ME-570-00-031
ME-570-00-032

DESIGN CONDITIONS
Design Pressure Internal: 6 psig Flooded to N11 @ S.G.=1.0
6 psig Flooded to N22 @ S.G.=2.4
Design Pressure External: -6 psig
Design Temperature: 280°F
Operating High Liquid Level: N22
Operating Low Liquid Level: N20
Corrosion Allowance: 1/16"
Type of Heads: 2:1 S.E., CONICAL
Stress Relief: None
Radiograph: Spot UW-11(b), UW-11(a)(5)(b)
Joint Efficiency: 1.0 per UW-12(a)
Conical Head: 0.85 per UW-12(b)
Cat. A - Shell: 0.85 per UW-12(b)
Cat. B - Shell: 0.85 per UW-12(b)
Nozzle Cat. A Butt welds (R & W Plate): 0.85 per UW-12(b)
Name Plate Marking: N/A
Hydrostatic Test Pressure: 27 psig (HORIZ.)
8 psig (VERT.)
40°F - 100°F
N.A. W.P.: 6 psig / -6 psig @ 280°F
Min Design Metal Temp.: -20°F @ 6 psig / -6 psig
No Impact Test Per: UHA-51
Impact Test Per: N/A
Contents: Process
Specific Gravity of Contents: 2.4

Over pressure protection is the RESPONSIBILITY OF THE OWNER/USER per UG-125
Removable pressure parts shall be marked as per UG-116(1)
Insulation (By others): None

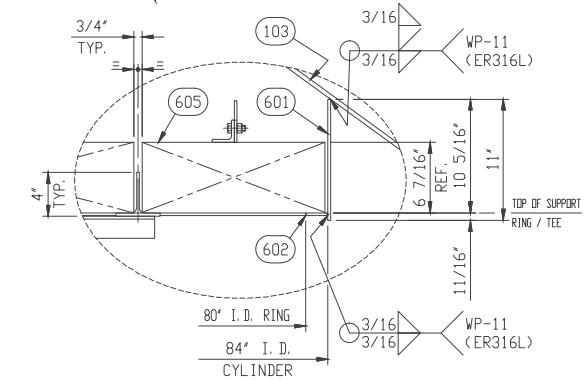
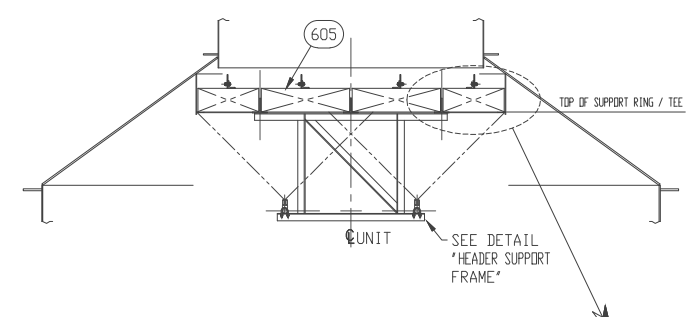
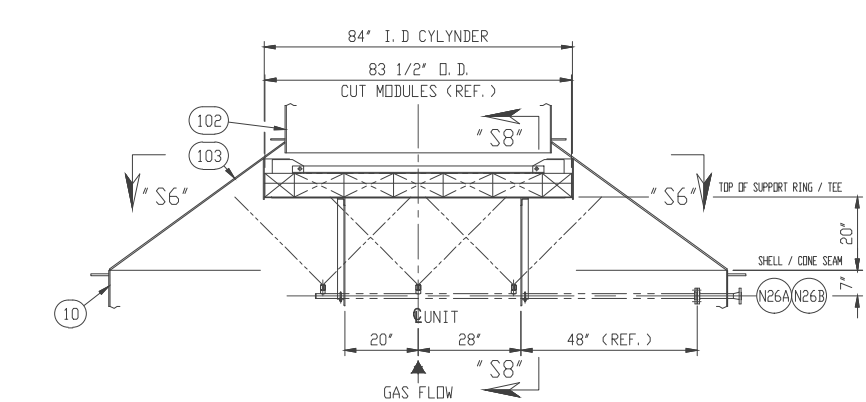
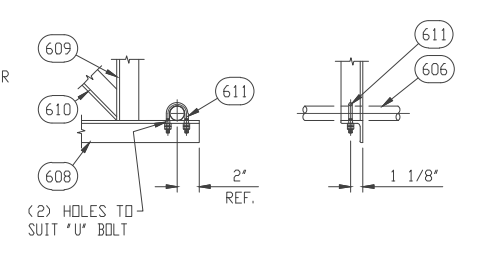
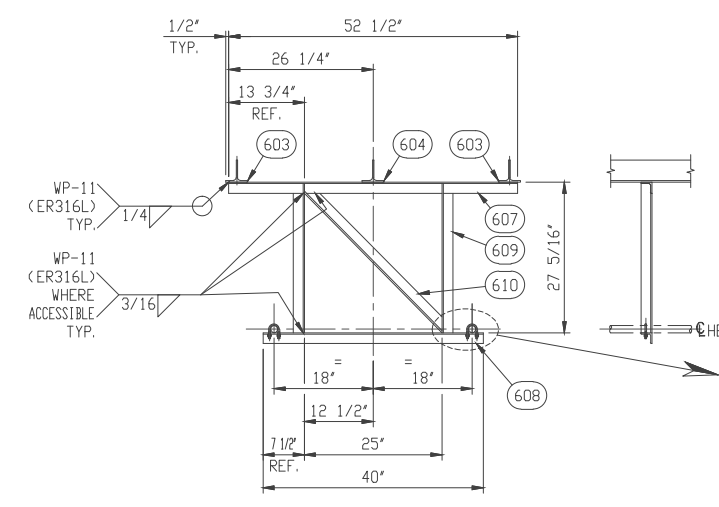
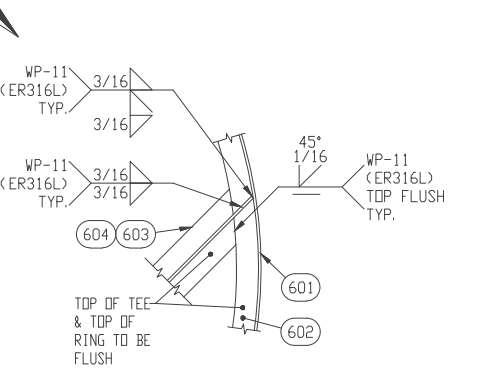
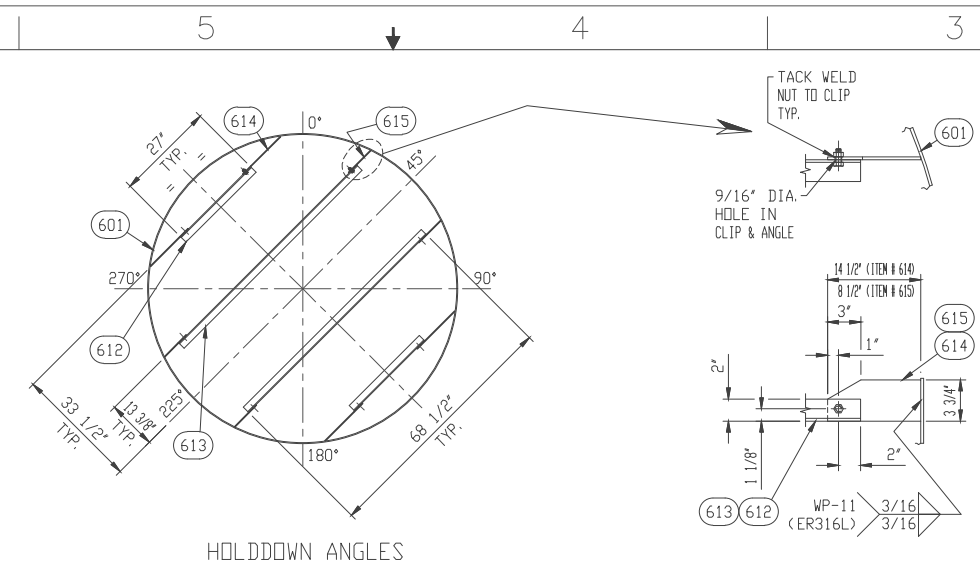
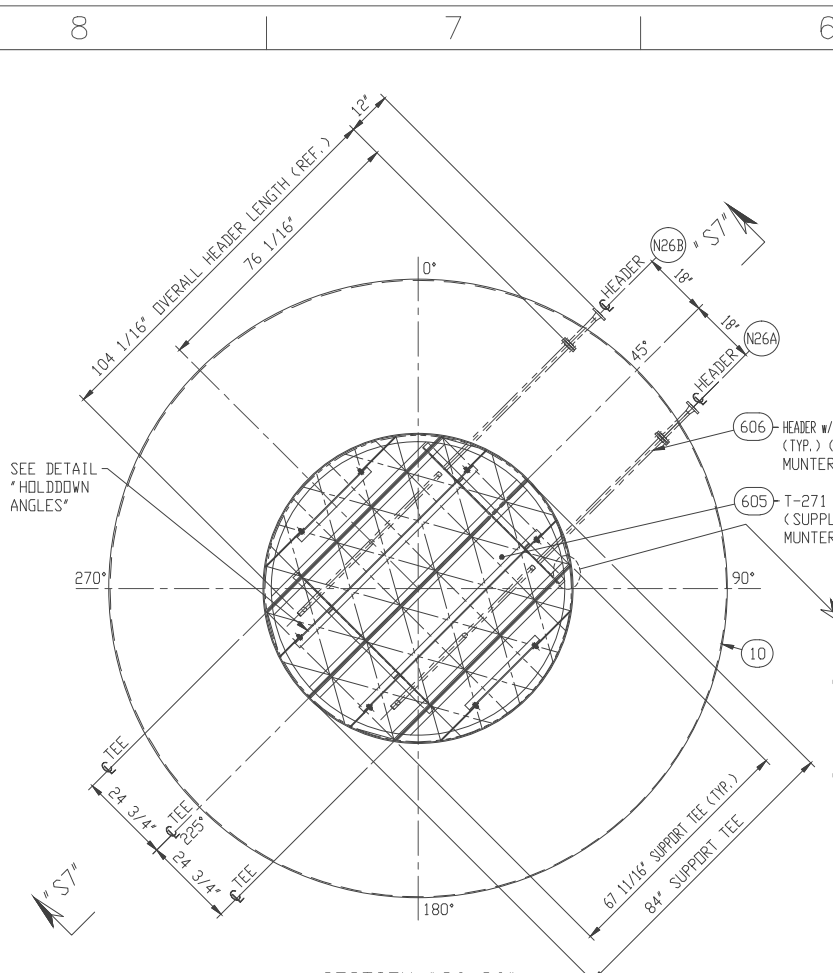
WEIGHTS
Empty: 40,217 lbs.
Full of water: 300,753 lbs.
Full to high liquid level (S.G. 2.4)

GENERAL NOTES
1) All bolt holes shall straddle major centre lines.
2) Protect all openings for shipment.
3) Clean and drain before shipment.
4) All welds shall be made using approved welding procedures.
5) No splatter or arc strikes on unit.
6) No centre punch marks on unit.

FABRICATION NOTES
1) Quality surveillance level 2.
2) Tell-tale holes to be plugged for shipment. The plugs shall be removed before the Vessel is placed in service.
3) The interior surface of the unit shall be free from tool marks and shall be smooth and clean. Any indentation greater than 1/32" shall be restored to the original thickness. Polishing of alloy surfaces shall not be permitted.
4) Contamination of alloy material to be avoided during all stages of fabrication. All areas shall be clean and free of dirt and oil.
5) Only stainless steel wire brushes and iron free grinding wheels shall be used on alloy surfaces. They shall be clean and previously unused on any surfaces.
6) Steel forming rolls must be cleaned and covered with heavy paper (or equivalent) prior to rolling alloy plates.
7) Machined surfaces shall be protected from damage during shipment with appropriate metal or plastic covers, which are watertight.
8) Spare bolting & gaskets shall be packed in crates for shipment together with the Vessel. Each box shall be durably marked with the requisition number, purchase order number, the Dwners address and contents.
9) Threads of external studs and nuts shall be coated with Fluorosilicon grease.
10) Acid clean as per spec. 253-MA-105-00-105-R2

N.D.T. NOTES
1) P.T. all fillet welds.
2) After removal of any temporary attachments, the affected areas shall be ground smooth & examined by liquid penetrant methods.
3) After completion of welding, on interior wetted surfaces, spot ferroxyl test any suspicious areas - base metal, heat affected zones on completed welds.
4) Repairs to be air / soap tested @ 5-10 psig prior to unit hydrotest.

Parts List				
ITEM	NAME	QTY	DESCRIPTION	MATERIAL
601	CYLINDER	1	1/4" x 264 11/16" x 11" (ROLL TO 84" I. D.)	SA-240-316/L
602	SUPPORT RING	1	1/4" x 83 7/8" O. D. x 80" I. D.	SA-240-316/L
603	SUPPORT TEE	2	WT4x7.5 x 67 11/16" LG.	SA-479-316/L
604	SUPPORT TEE	1	WT4x7.5 x 84" LG.	SA-479-316/L
605	MODULE	24	T-271 MODULE (SUPPLIED BY MUNTERS)	316L S. ST' L
606	HEADER w/ SPRAY NOZZLE	2	1" SCH. 80S PIPE w/ R. F. S. D. FLANGE (SUPPLIED BY MUNTERS)	316L S. ST' L
607	ANGLE	2	2" x 2" x 1/4" x 52 1/2" LG.	SA-479-316/L
608	ANGLE	2	2" x 2" x 1/4" x 40" LG.	SA-479-316/L
609	ANGLE	4	2" x 2" x 1/4" x 27 1/16" LG.	SA-479-316/L
610	BRACING ANGLE	2	2" x 2" x 1/4" x 35 7/8" LG.	SA-479-316/L
611	U-BOLT	4	U-BOLT FOR 1" PIPE, c/w (4) HEX. NUTS	316L S. ST' L
612	HOLDDOWN ANGLE	2	2" x 2" x 1/4" x 27" LG.	SA-479-316/L
613	HOLDDOWN ANGLE	2	2" x 2" x 1/4" x 68 1/2" LG.	SA-479-316/L
614	HOLDDOWN ANGLE CLIP	4	1/4" x 3 3/4" x 14 1/2"	SA-240-316/L
615	HOLDDOWN ANGLE CLIP	4	1/4" x 3 3/4" x 8 1/2"	SA-240-316/L
616	HOLDDOWN ANGLE BOLT	8	1/2" - 13NC x 1 1/4" LG. HEX. HEAD BOLT c/w (1) HEX. NUT	316L S. ST' L



MUNTERS REFERENCE DRAWING
B-35776-01 Rev. D

NOTE
MODULES TO BE TRIAL FITTED & SHIPPED SEPARATELY.

REV.	DATE	BY	REVISIONS

CUSTOMER PURCHASE ORDER No.: E3677-M315

THIS DRAWING IS COPYRIGHTED AND IS THE PROPERTY OF ELLETT INDUSTRIES LTD. THE INFORMATION THEREIN MAY NOT BE USED, LENT, NOR REPRODUCED WITHOUT WRITTEN PERMISSION.

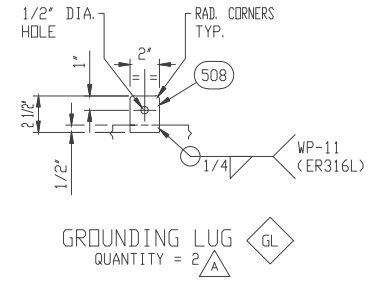
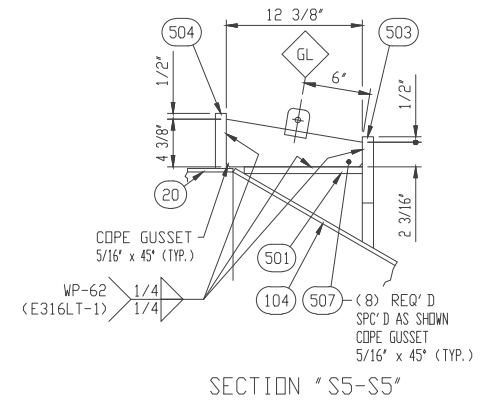
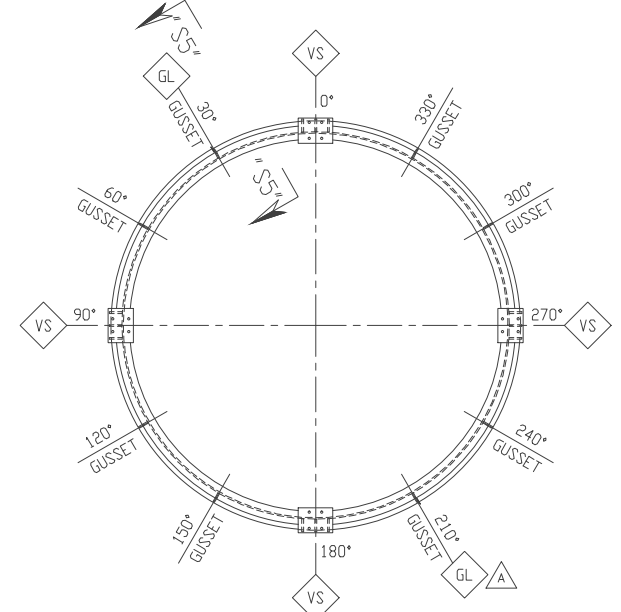
SHERRITT INTERNATIONAL CORP. 72" I. D. / 168" I. D. #4 FLASH TANK
PROJECT: NE 16# EXPANSION FERT SASKATCHEWAN, ALBERTA, CANADA EQUIPMENT No.: 2-VE-095

ELLETT Industries Ltd. - Port Coquitlam, B.C.

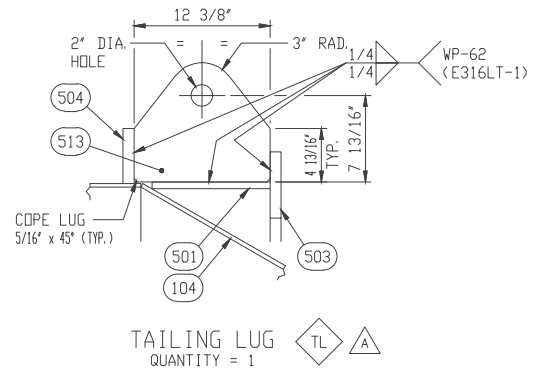
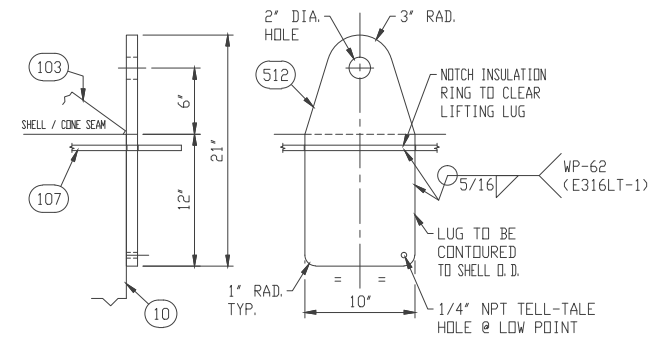
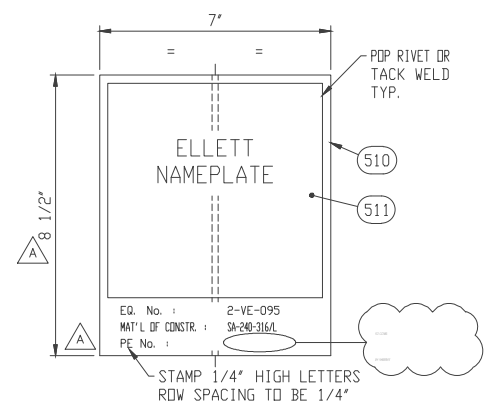
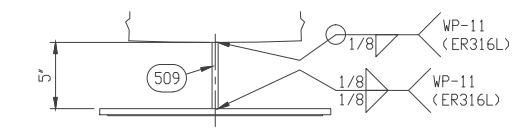
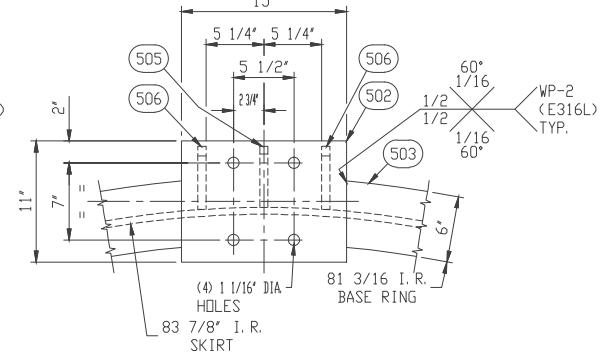
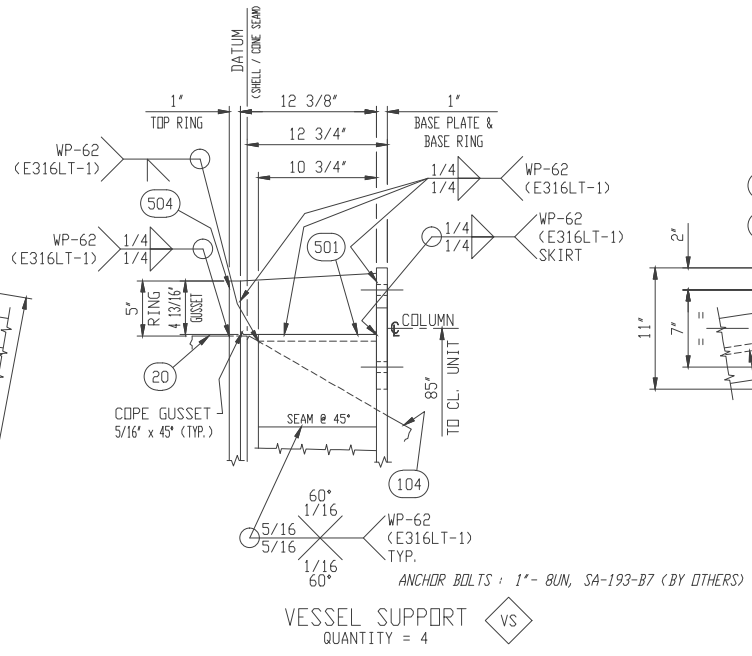
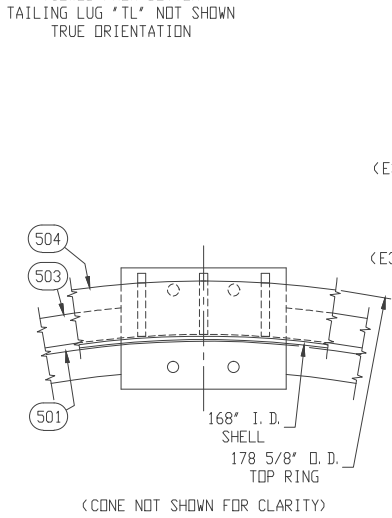
ELLETT JOB No. 43916	DRAWN: B. I. P. CHECKED: A. S. K. APPROVED:	DATE: 08/12/08 DATE: - DATE:	SCALE: N. T. S.	DRAWING NUMBER N4-191-6 SHEET 6 OF 6	REV. 0
-------------------------	---	------------------------------------	-----------------	--	-----------

Parts List				
ITEM	NAME	QTY	DESCRIPTION	MATERIAL
501	SKIRT	1	5/8" x 528 3/4" x 10 3/4" (ROLL TO 167 11/16" I.D.)	SA-240-316/L
502	*VS* BASE PLATE	4	1" x 11" x 15"	SA-240-316/L
503	*VS* BOTTOM RING SEGMENT	4	1" x 87 3/16" O.R. x 81 3/16" I.R. (80.13 DEG. SEG.)	SA-240-316/L
504	*VS* TOP RING	1	1" x 178 5/8" O.D. x 168 3/4" I.D.	SA-240-316/L
505	*VS* GUSSET	4	3/4" x 5 9/16" x 12 3/8"	SA-240-316/L
506	*VS* GUSSET	8	3/4" x 5 11/16" x 12 3/8"	SA-240-316/L
507	*VS* GUSSET	8	3/4" x 4 3/8" x 12 3/8"	SA-240-316/L
508	*GL* GROUNDING LUG	2	1/4" x 2" x 2 1/2"	316/L S.S.T'L
509	*NP* BRACKET	1	3/16" x 5" x 8 1/2"	SA-240-316/L
510	*NP* BRACKET	1	3/16" x 7" x 8 1/2"	316 S.S.T'L
511	*NP* NAMEPLATE	1	ELLETT STD. NAMEPLATE	S.S.T'L
512	*LL* LIFTING LUG	2	1" x 10" x 21"	SA-240-316/L
513	*TL* TAILING LUG	1	1" x 10 13/16" x 12 3/8"	SA-240-316/L

316/L = DUAL CERTIFICATION REQUIRED



VESSEL SUPPORT
VIEWED FROM BOTTOM
TAILING LUG *TL* NOT SHOWN
TRUE ORIENTATION



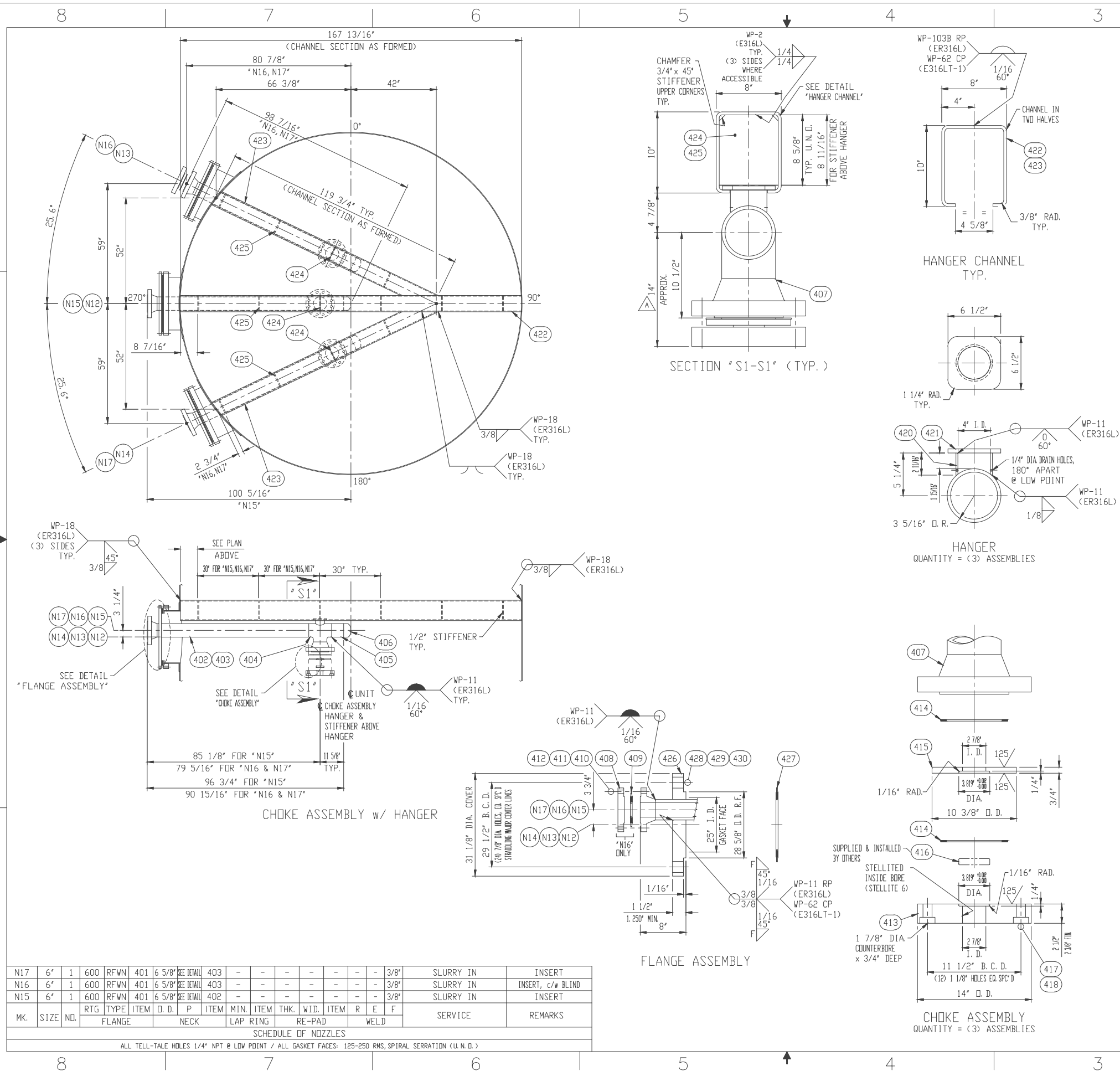
REV. A	09/16/08	B.I.P.	AS PER CUSTOMER MARK-UP 08/28/08 / AS NOTED / CERTIFIED FOR CONSTRUCTION
REV. DATE	BY	REVISIONS	
CUSTOMER PURCHASE ORDER No.: E3677-M315		THIS DRAWING IS COPYRIGHTED AND IS THE PROPERTY OF ELLETT INDUSTRIES LTD.. THE INFORMATION THEREIN MAY NOT BE USED, LENT, NOR REPRODUCED WITHOUT WRITTEN PERMISSION.	
SHERRITT INTERNATIONAL CORP.		72" I.D. / 168" I.D. #4 FLASH TANK	
PROJECT: ME 16- EXPANSION FERT SASKATCHEWAN, ALBERTA, CANADA		EQUIPMENT No.: 2-VE-095	
ELLETT Industries Ltd. - Port Coquitlam, B.C.			
ELLETT JOB No.	DRAWN: B. I. P.	DATE: 06/08/08	SCALE: N. T. S.
43916	CHECKED: A. S. K.	DATE: 07/01/08	DRAWING NUMBER: N4-191-5
	APPROVED:	DATE:	SHEET 5 OF 6

Parts List				
ITEM	NAME	QTY	DESCRIPTION	MATERIAL
401	*N15, N16, N17*	3	6" CLASS 600, B16.5 R.F.W.N. FLANGE (SCH. 80S BORE)	SA-182-F316/L
402	*N15*	1	6" SCH. 80S (0.432") PIPE x 74 5/8" LG.	SA-312-TP316/L
403	*N16, N17*	2	6" SCH. 80S (0.432") PIPE x 68 13/16" LG.	SA-312-TP316/L
404	*N15, N16, N17*	3	6" x 6" SCH. 80S (0.432") WELD TEE	SA-403-WP316/L-W
405	*N15, N16, N17*	3	6" SCH. 80S (0.432") PIPE x 6" LG.	SA-312-TP316/L
406	*N15, N16, N17*	3	6" SCH. 80S (0.432") WELD CAP	SA-403-WP316/L-W
407	FLANGE	3	6" CLASS 600, B16.5 R.F.W.N. FLANGE (SCH. 80S BORE)	SA-182-F316/L
408	*N16*	1	6" CLASS 600, B16.5 R.F. BLIND FLANGE	SA-182-F316/L
409	*N16*	3	6" CLASS 600, 0.175" SPIRAL WOUND GASKET c/w 1/8" CENTERING RING (316L S. ST'L) & 1/8" INNER RING (316L S. ST'L) (QTY. INCLUDES (2) SPARES)	316L S. ST'L w/ GRAPHITE FILLER
410	*N16*	14	1" - 8UN x 7 1/4" LG. STUD (QTY. INCLUDES (2) SPARES)	SA-193-BBM
411	*N16*	28	1" - 8UN HEAVY HEX. NUT (QTY. INCLUDES (4) SPARES)	SA-194-BM
412	*N16*	28	1" SAE FLAT WASHER (QTY. INCLUDES (4) SPARES)	316 S. ST'L
413	CHOKER BLIND	3	2 1/2" (2 3/8" FIN.) x 14" O.D. x 2 7/8" I.D., STELLITED INSIDE BORE (STELLITE 6)	SA-240-316/L
414	CHOKER FLANGE GASKET	12	6" CLASS 600, 1/8" RING STYLE GASKET, (QUANTITY INCLUDES (1) SPARE SET PER ASSEMBLY, TOTAL (3) SPARE SETS)	TEFLON
415	CHOKER HOLDER RING	3	3/4" x 10 3/8" O.D. x 2 7/8" I.D.	SA-240-316/L
416	CHOKER	3	SUPPLIED & INSTALLED BY OTHERS	-
417	CHOKER SCREW	36	1" - 8UN x 6 1/4" LG. HEX. SOCKET HEAD CAP SCREW	SA-193-BBM
418	CHOKER NUT	36	1" - 8UN HEAVY HEX. NUT	SA-194-BM
419		0	-VOID-	
420	HANGER PIPE	3	4" SCH. 40S (0.237") PIPE x 2 11/16" LG.	SA-312-TP316/L
421	HANGER PLATE	3	1/2" x 6 1/2" x 6 1/2"	SA-240-316/L
422	HALF CHANNEL	2	3/8" x 14 7/16" x 167 13/16"	SA-240-316/L
423	HALF CHANNEL	4	3/8" x 14 7/16" x 119 3/4"	SA-240-316/L
424	CHANNEL STIFFENER (ABOVE HANGER)	3	1/2" x 7 1/8" x 8 11/16"	SA-240-316/L
425	CHANNEL STIFFENER	11	1/2" x 7 1/8" x 8 5/8"	SA-240-316/L
426	*N12, N13, N14*	3	1 1/2" (1.250" MIN.) x 31 1/8" FIN. DIA.	SA-240-316/L
427	*N12, N13, N14*	9	0.175" x 28 1/8" O.D. x 27 1/8" I.D. SPIRAL WOUND GASKET, STYLE LST c/w 1/8" x 28 3/4" O.D. CENTERING RING (316L S. ST'L) & 1/8" x 26 1/8" I.D. INNER RING (316L S. ST'L) (QTY. INCLUDES (2) SPARES PER NOZZLE, TOTAL (6) SPARES)	316L S. ST'L w/ GRAPHITE FILLER
428	*N12, N13, N14*	81	3/4" - 10NC x 6 3/4" LG. STUD (QTY. INCLUDES (3) SPARES PER NOZZLE, TOTAL (9) SPARES)	SA-193-BBM CLASS 1
429	*N12, N13, N14*	162	3/4" - 10NC HEAVY HEX. NUT (QTY. INCLUDES (6) SPARES PER NOZZLE, TOTAL (18) SPARES)	SA-194-BM
430	*N12, N13, N14*	162	3/4" SAE FLAT WASHER (QTY. INCLUDES (6) SPARES PER NOZZLE, TOTAL (18) SPARES)	316 S. ST'L

316/L = DUAL CERTIFICATION REQUIRED



REV. A	DATE 09/16/08	BY B.I.P.	AS PER CUSTOMER MARK-UP 08/28/08 / AS NOTED / CERTIFIED FOR CONSTRUCTION
REVISIONS			
CUSTOMER PURCHASE ORDER No.: E3677-M315		THIS DRAWING IS COPYRIGHTED AND IS THE PROPERTY OF ELLETT INDUSTRIES LTD.. THE INFORMATION THEREIN MAY NOT BE USED, LENT, NOR REPRODUCED WITHOUT WRITTEN PERMISSION.	
SHERRITT INTERNATIONAL CORP.		72" I. D. / 168" I. D. #4 FLASH TANK	
PROJECT: ME 164 EXPANSION		EQUIPMENT No.: 2-VE-095	
PROJECT: FERT SASKATCHEWAN, ALBERTA, CANADA			
ELLETT Industries Ltd. - Port Coquitlam, B.C.			
ELLETT JOB No. 43916	DRAWN: B. I. P.	DATE: 06/08/08	SCALE: N. T. S.
	CHECKED: A. S. K.	DATE: 07/01/08	DRAWING NUMBER N4-191-4
	APPROVED:	DATE:	SHEET 4 OF 6



MK.	SIZE	NO.	RTG	TYPE	ITEM	O. D.	P	ITEM	MIN.	ITEM	THK.	W.I.D.	ITEM	R	E	F	SERVICE	REMARKS	
N17	6"	1	600	RFWN	401	6 5/8"	SEE DETAIL	403	-	-	-	-	-	-	-	-	3/8"	SLURRY IN	INSERT
N16	6"	1	600	RFWN	401	6 5/8"	SEE DETAIL	403	-	-	-	-	-	-	-	-	3/8"	SLURRY IN	INSERT, c/w BLIND
N15	6"	1	600	RFWN	401	6 5/8"	SEE DETAIL	402	-	-	-	-	-	-	-	-	3/8"	SLURRY IN	INSERT

SCHEDULE OF NOZZLES

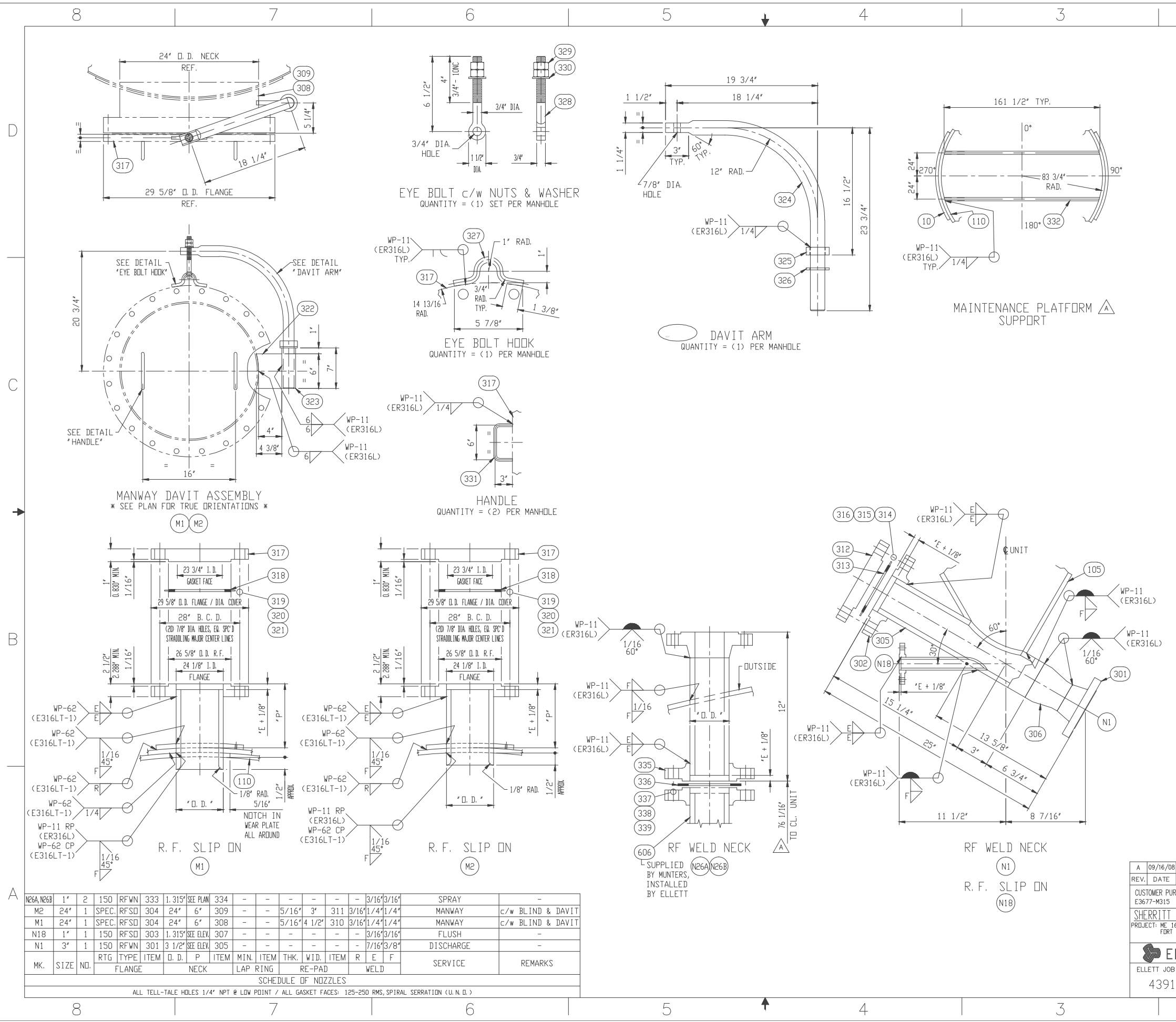
ALL TELL-TALE HOLES 1/4" NPT @ LOW POINT / ALL GASKET FACES: 125-250 RMS, SPIRAL SERRATION (U. N. D.)

Parts List				
ITEM	NAME	QTY	DESCRIPTION	MATERIAL
301	*N1 FLANGE	1	3" CLASS 150, B16.5 R.F.W.N. FLANGE (SCH BOS BORE)	SA-182-F316/L
302	FLANGE	1	4" CLASS 150, B16.5 R.F.S.D. FLANGE	SA-182-F316/L
303	*N18 FLANGE	1	1" CLASS 150, B16.5 R.F.S.D. FLANGE	SA-182-F316/L
304	*M1, M2 FLANGE	2	2 1/2" (2.288" MIN.) x 29 5/8" FIN. O.D. x 24 1/8" FIN. I.D.	SA-240-316/L
305	*N1 NECK	1	4" SCH 120S (0.438") PIPE x 18 1/2" LG. (INCL. TRIM)	SA-312-TP316/L
306	*N1 REDUCER	1	4" x 3" SCH BOS CONCENTRIC REDUCER	SA-403-WP316/L-W
307	*N18 NECK	1	1" SCH BOS (0.179") PIPE x 9 1/2" LG. (INCL. TRIM)	SA-312-TP316/L
308	*M1 NECK	1	1/4" x 74 5/8" x 7 5/16" (ROLL TO 24" D.D.)	SA-240-316/L
309	*M2 NECK	1	1/4" x 74 5/8" x 8 7/16" (ROLL TO 24" D.D.)	SA-240-316/L
310	*M1 REPAD	1	5/16" x 33" O.D. x 24 1/8" I.D.	SA240-316/L
311	*M2 REPAD	1	5/16" x 30" x 30 7/16"	SA240-316/L
312	BLIND FLANGE	1	4" CLASS 150, B16.5 R.F. BLIND FLANGE	SA-182-F316/L
313	GASKET	3	4" CLASS 150, 0.175" SPIRAL WOUND GASKET c/w 1/8" CENTERING RING (316L S. ST'L) & 1/8" INNER RING (316L S. ST'L) (QTY. INCLUDES (2) SPARES)	316L S. ST'L w/ GRAPHITE FILLER
314	STUD	9	5/8" - 11NC x 4" LG. STUD (QTY. INCLUDES (1) SPARE)	SA-193-BM
315	NUT	18	5/8" - 11NC HEAVY HEX. NUT (QTY. INCLUDES (2) SPARES)	SA-194-BM
316	WASHER	18	5/8" SAE FLAT WASHER (QTY. INCLUDES (2) SPARES)	316 S. ST'L
317	*M1, M2 BLIND FLANGE	2	1" (0.800" MIN.) x 29 5/8" FIN. DIA.	SA-240-316/L
318	*M1, M2 GASKET	6	0.175" x 26 1/8" O.D. x 25 1/8" I.D. SPIRAL WOUND GASKET, STYLE LSI c/w 1/8" x 27 1/8" O.D. CENTERING RING (316L S. ST'L) & 1/8" x 24 1/8" I.D. INNER RING (316L S. ST'L) (QTY. INCLUDES (2) SPARES PER NOZZLE, TOTAL (4) SPARES)	316L S. ST'L w/ GRAPHITE FILLER
319	*M1, M2 STUD	44	3/4" - 10NC x 6" LG. STUD (QTY. INCLUDES (2) SPARES PER NOZZLE, TOTAL (4) SPARES)	SA-193-BM CLASS 1
320	*M1, M2 NUT	88	3/4" - 10NC HEAVY HEX. NUT (QTY. INCLUDES (4) SPARES PER NOZZLE, TOTAL (8) SPARES)	SA-194-BM
321	*M1, M2 WASHER	88	3/4" SAE FLAT WASHER (QTY. INCLUDES (4) SPARES, TOTAL (8) SPARES)	316 S. ST'L
322	*M1, M2 DAVIT WEB PLATE	2	3/4" x 4 3/8" x 6"	SA240-316/L
323	*M1, M2 DAVIT SLEEVE	2	2" SCH BOS (0.218") PIPE x 7" LG.	316/L S. ST'L
324	*M1, M2 DAVIT ARM	2	1 7/8" DIA. R/BAR x 38 5/16" LG.	316/L S. ST'L
325	*M1, M2 DAVIT ARM STOP	2	1" x 3" O.D. x 1 15/16" I.D.	316/L S. ST'L
326	*M1, M2 DAVIT ARM WASHER	2	1/4" x 3" O.D. x 1 15/16" I.D.	TEFLON
327	*M1, M2 EYE BOLT HOOK	2	1/2" DIA. R/BAR x 8 1/4" LG.	316/L S. ST'L
328	*M1, M2 EYE BOLT	2	3/4" - 10NC x 6 1/2" LG. STD. EYE BOLT	316/L S. ST'L
329	*M1, M2 EYE BOLT NUT	4	3/4" - 10NC HEX. NUT	316/L S. ST'L
330	*M1, M2 EYE BOLT WASHER	2	3/4" SAE FLAT WASHER	316/L S. ST'L
331	*M1, M2 HANDLE	2	1/2" DIA. R/BAR x 12" LG.	316/L S. ST'L
332	PLATFORM PIPE	2	3" SCH 40S (0.216") PIPE x 161 1/2" LG.	SA-312-TP316/L
333	*N26A, N26B FLANGE	2	1" CLASS 150, B16.5 R.F.W.N. FLANGE (SCH BOS BORE)	SA-182-F316/L
334	*N26A, N26B NECK	2	1" SCH BOS (0.179") PIPE x 10" LG. (INCL. TRIM)	SA-312-TP316/L
335	*N26A, N26B FLANGE	2	1" CLASS 150, B16.5 R.F.S.D. FLANGE	SA-182-F316/L
336	*N26A, N26B GASKET	6	1" CLASS 150, 1/8" RING STYLE GASKET, (QTY. INCLUDES (2) SPARES PER NOZZLE, TOTAL (4) SPARES)	TEFLON
337	*N26A, N26B STUD	10	1/2" - 13NC x 3" LG. STUD (QTY. INCLUDES (1) SPARE PER NOZZLE, TOTAL (2) SPARES)	SA-193-BM
338	*N26A, N26B NUT	20	1/2" - 13NC HEAVY HEX. NUT (QTY. INCLUDES (2) SPARES PER NOZZLE, TOTAL (4) SPARES)	SA-194-BM
339	*N26A, N26B WASHER	20	1/2" SAE FLAT WASHER (QTY. INCLUDES (2) SPARES PER NOZZLE, TOTAL (4) SPARES)	316 S. ST'L

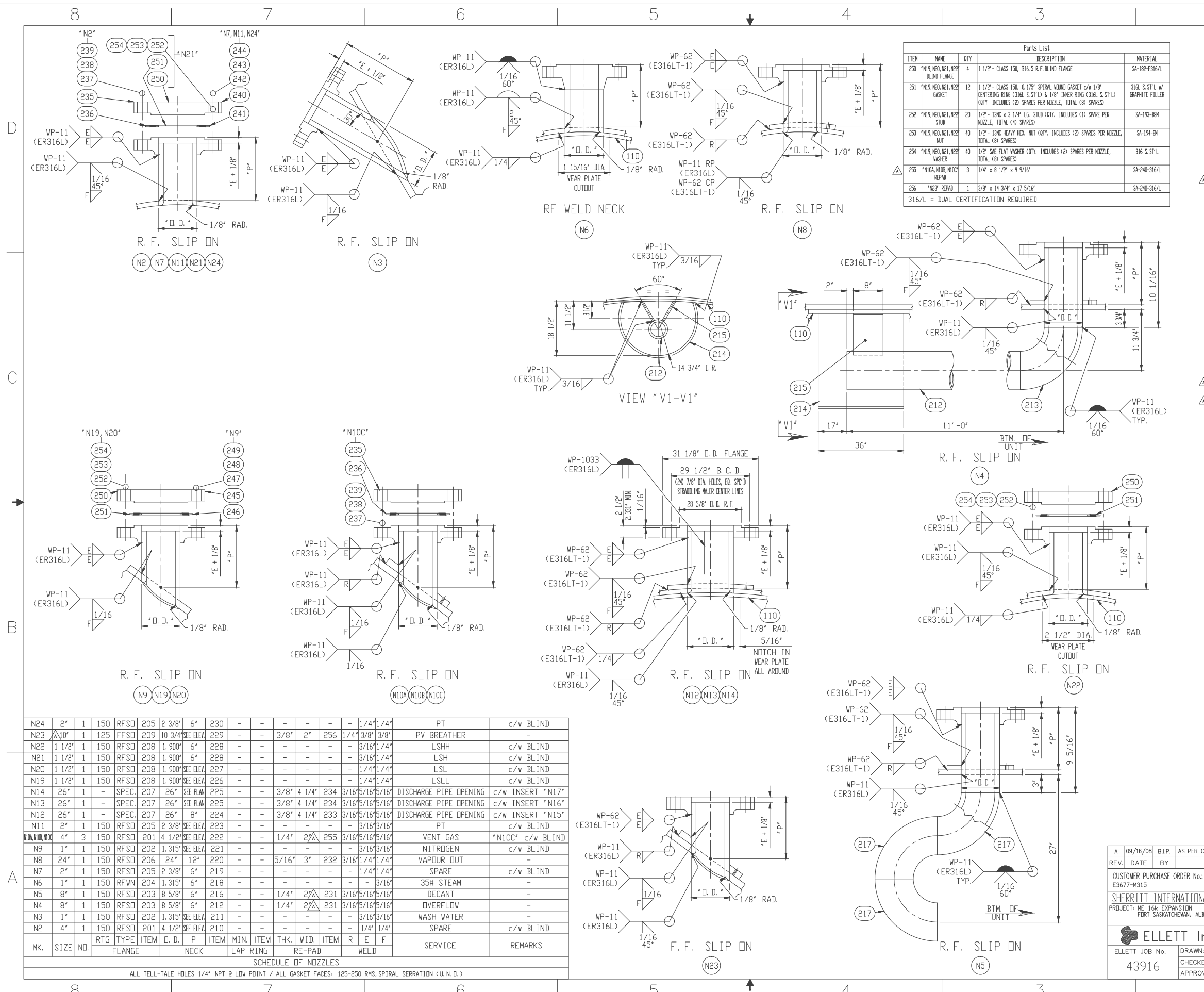
316/L = DUAL CERTIFICATION REQUIRED



REV. DATE	BY	AS PER CUSTOMER MARK-UP 08/28/08 / AS NOTED / CERTIFIED FOR CONSTRUCTION
REVISIONS		
CUSTOMER PURCHASE ORDER No. E3677-M315		THIS DRAWING IS COPYRIGHTED AND IS THE PROPERTY OF ELLETT INDUSTRIES LTD.. THE INFORMATION THEREIN MAY NOT BE USED, LENT, NOR REPRODUCED WITHOUT WRITTEN PERMISSION.
SHERRITT INTERNATIONAL CORP. PROJECT: NE 164 EXPANSION FERT SASKATCHEWAN, ALBERTA, CANADA		72" I. D. / 168" I. D. #4 FLASH TANK EQUIPMENT No. : 2-VE-095
ELLETT Industries Ltd. - Port Coquitlam, B.C.		
ELLETT JOB No. 43916	DRAWN: B. I. P. DATE: 06/08/08	SCALE: N. T. S.
CHECKED: A. S. K.	DATE: 07/01/08	DRAWING NUMBER N4-191-3
APPROVED:	DATE:	SHEET 3 OF 6



MK.	SIZE	NO.	RTG	TYPE	ITEM	O. D.	P	ITEM	MIN.	ITEM	THK.	W.I.D.	ITEM	R	E	F	SERVICE	REMARKS	
					FLANGE					LAP RING			RE-PAD				WELD		
SCHEDULE OF NOZZLES																			
N26A, N26B	1"	2	150	RFWN	333	1.315"	SEE PLAN	334	-	-	-	-	-	-	-	-	3/16" x 3/16"	SPRAY	
M2	24"	1	SPEC.	RFSD	304	24"	6"	309	-	-	5/16"	3"	311	3/16"	1/4"	1/4"		MANWAY	c/w BLIND & DAVIT
M1	24"	1	SPEC.	RFSD	304	24"	6"	308	-	-	5/16"	4 1/2"	310	3/16"	1/4"	1/4"		MANWAY	c/w BLIND & DAVIT
N18	1"	1	150	RFSD	303	1.315"	SEE ELEV.	307	-	-	-	-	-	-	-	-	3/16" x 3/16"	FLUSH	-
N1	3"	1	150	RFWN	301	3 1/2"	SEE ELEV.	305	-	-	-	-	-	-	-	-	7/16" x 3/8"	DISCHARGE	-



Parts List

ITEM	NAME	QTY	DESCRIPTION	MATERIAL
201	N2, N10A, N10B, N10C FLANGE	4	4" CLASS 150, B16.5 R.F. S.D. FLANGE	SA-182-F316/L
202	N3, N7 FLANGE	2	1" CLASS 150, B16.5 R.F. S.D. FLANGE	SA-182-F316/L
203	N4, N5 FLANGE	2	8" CLASS 150, B16.5 R.F. S.D. FLANGE	SA-182-F316/L
204	N6 FLANGE	1	1" CLASS 150, B16.5 R.F. S.D. FLANGE (SCH 80S BORE)	SA-182-F316/L
205	N7, N11, N24 FLANGE	3	2" CLASS 150, B16.5 R.F. S.D. FLANGE	SA-182-F316/L
206	N8 FLANGE	1	24" CLASS 150, B16.5 R.F. S.D. FLANGE	SA-182-F316/L
207	N12, N13, N14 FLANGE	3	2 1/2" (2.331" MIN.) x 31 1/8" FIN. D.D. x 26 1/8" FIN. I.D.	SA-240-316/L
208	N19, N20, N21, N22 FLANGE	4	1 1/2" CLASS 150, B16.5 R.F. S.D. FLANGE	SA-182-F316/L
209	N23 FLANGE	1	10" CLASS 125, B16.5 F.F. S.D. FLANGE	SA-182-F316/L
210	N22 NECK	1	4" SCH 40S (0.237") PIPE x 7 1/2" LG. (INCL. TRIM)	SA-312-IP316/L
211	N21 NECK	1	1" SCH 80S (0.179") PIPE x 9" LG. (INCL. TRIM)	SA-312-IP316/L
212	N4 PIPE	1	8" SCH 40S (0.322") PIPE x 136" LG. (NMC (2) PCS.) (INCL. TRIM)	SA-312-IP316/L
213	N11 ELBOW	1	8" SCH 40S (0.322") S.F.S.R. 90 DEG. ELBOW	SA-400-WP316/L-W
214	N4 BAFFLE	1	1/4" x 51 9/16" x 36" (ROLL TO 14 3/4" I.R.)	SA-240-316/L
215	N4 GUSSET	2	1/4" x 8" x 8 9/16"	SA-240-316/L
216	N5 NECK	1	8" SCH 40S (0.322") PIPE x 9 1/2" LG. (INCL. TRIM)	SA-312-IP316/L
217	N5 ELBOW	3	8" SCH 40S (0.322") S.F.S.R. 90 DEG. ELBOW	SA-400-WP316/L-W
218	N6 NECK	1	1" SCH 80S (0.179") PIPE x 5" LG. (INCL. TRIM)	SA-312-IP316/L
219	N7 NECK	1	2" SCH 80S (0.218") PIPE x 7" LG. (INCL. TRIM)	SA-312-IP316/L
220	N8 NECK	1	1/4" x 74 5/8" x 15" (INCL. TRIM (ROLL TO 24" D.D.))	SA-240-316/L
221	N9 NECK	1	1" SCH 80S (0.179") PIPE x 13" LG. (INCL. TRIM)	SA-312-IP316/L
222	N10A, N10B, N10C NECK	3	4" SCH 80S (0.337") PIPE x 15" LG. (INCL. TRIM)	SA-312-IP316/L
223	N11 NECK	1	2" SCH 40S (0.154") PIPE x 8" LG. (INCL. TRIM)	SA-312-IP316/L
224	N12 NECK	1	5/16" x 80 11/16" x 9 1/2" (INCL. TRIM (ROLL TO 26" D.D.))	SA-240-316/L
225	N13, N14 NECK	2	5/16" x 80 11/16" x 12 1/2" (INCL. TRIM (ROLL TO 26" D.D.))	SA-240-316/L
226	N19 NECK	1	1 1/2" SCH 80S (0.200") PIPE x 8" LG. (INCL. TRIM)	SA-312-IP316/L
227	N20 NECK	1	1 1/2" SCH 80S (0.200") PIPE x 8" LG. (INCL. TRIM)	SA-312-IP316/L
228	N21 NECK	2	1 1/2" SCH 80S (0.200") PIPE x 6 1/2" LG. (INCL. TRIM)	SA-312-IP316/L
229	N22 NECK	1	10" SCH 40S (0.365") PIPE x 17" LG. (INCL. TRIM)	SA-312-IP316/L
230	N24 NECK	1	2" SCH 80S (0.218") PIPE x 6 1/2" LG. (INCL. TRIM)	SA-312-IP316/L
231	N4 REPAID	2	1/4" x 12 5/8" D.D. x 8 3/4" I.D.	SA-240-316/L
232	N8 REPAID	1	5/16" x 38" x 30 7/16"	SA-240-316/L
233	N12 REPAID	1	3/8" x 34 1/2" D.D. x 26 1/8" I.D.	SA-240-316/L
234	N13, N14 REPAID	2	3/8" x 35 1/4" x 34 1/2"	SA-240-316/L
235	N2, N10C BLIND FLANGE	2	4" CLASS 150, B16.5 R.F. BLIND FLANGE	SA-182-F316/L
236	N2, N10C GASKET	6	4" CLASS 150, 0.175" SPIRAL WOUND GASKET c/w 1/8" CENTERING RING (316 L S.S.T'L) & 1/8" INNER RING (316 L S.S.T'L) (QTY. INCLUDES (2) SPARES PER NOZZLE, TOTAL (4) SPARES)	316 L S.S.T'L w/ GRAPHITE FILLER
237	N2, N10C STUD	18	5/8" - 11NC x 4" LG. STUD (QTY. INCLUDES (1) SPARE PER NOZZLE, TOTAL (2) SPARES)	SA-193-B8M
238	N2, N10C NUT	36	5/8" - 11NC HEAVY HEX. NUT (QTY. INCLUDES (2) SPARES PER NOZZLE, TOTAL (4) SPARES)	SA-194-B8
239	N2, N10C WASHER	36	5/8" SAE FLAT WASHER (QTY. INCLUDES (2) SPARES PER NOZZLE, TOTAL (4) SPARES)	316 S.S.T'L
240	N7, N11, N24 BLIND FLANGE	3	2" CLASS 150, B16.5 R.F. BLIND FLANGE	SA-182-F316/L
241	N7, N11, N24 GASKET	9	2" CLASS 150, 0.175" SPIRAL WOUND GASKET c/w 1/8" CENTERING RING (316 L S.S.T'L) & 1/8" INNER RING (316 L S.S.T'L) (QTY. INCLUDES (2) SPARES PER NOZZLE, TOTAL (6) SPARES)	316 L S.S.T'L w/ GRAPHITE FILLER
242	N7, N11, N24 STUD	15	5/8" - 11NC x 3 1/2" LG. STUD (QTY. INCLUDES (1) SPARE PER NOZZLE, TOTAL (3) SPARES)	SA-193-B8M
243	N7, N11, N24 NUT	30	5/8" - 11NC HEAVY HEX. NUT (QTY. INCLUDES (2) SPARES PER NOZZLE, TOTAL (6) SPARES)	SA-194-B8
244	N7, N11, N24 WASHER	30	5/8" SAE FLAT WASHER (QTY. INCLUDES (2) SPARES PER NOZZLE, TOTAL (6) SPARES)	316 S.S.T'L
245	N9 BLIND FLANGE	1	1" CLASS 150, B16.5 R.F. BLIND FLANGE	SA-182-F316/L
246	N9 GASKET	3	1" CLASS 150, 0.175" SPIRAL WOUND GASKET c/w 1/8" CENTERING RING (316 L S.S.T'L) & 1/8" INNER RING (316 L S.S.T'L) (QTY. INCLUDES (2) SPARES)	316 L S.S.T'L w/ GRAPHITE FILLER
247	N9 STUD	5	1/2" - 13NC x 3" LG. STUD (QTY. INCLUDES (1) SPARE)	SA-193-B8M
248	N9 NUT	10	1/2" - 13NC HEAVY HEX. NUT (QTY. INCLUDES (2) SPARES)	SA-194-B8
249	N9 WASHER	10	1/2" SAE FLAT WASHER (QTY. INCLUDES (2) SPARES)	316 S.S.T'L

316/L = DUAL CERTIFICATION REQUIRED



AS PER CUSTOMER MARK-UP 08/28/08 / AS NOTED / CERTIFIED FOR CONSTRUCTION

REVISIONS

REV.	DATE	BY	DESCRIPTION
1	09/16/08	B.I.P.	AS PER CUSTOMER MARK-UP 08/28/08 / AS NOTED / CERTIFIED FOR CONSTRUCTION

CUSTOMER PURCHASE ORDER No.: E3677-M315

SHERITT INTERNATIONAL CORP. 72" I. D. / 168" I. D. #4 FLASH TANK
 PROJECT: ME 164 EXPANSION FERT SASKATCHEWAN, ALBERTA, CANADA
 EQUIPMENT No.: 2-VE-095

ELLETT JOB No. 43916	DRAWN: B. I. P. DATE: 06/08/08	SCALE: N. T. S.	DRAWING NUMBER N4-191-2	REV. A
CHECKED: A. S. K. DATE: 07/01/08	APPROVED: DATE:	SHEET 2 of 6		