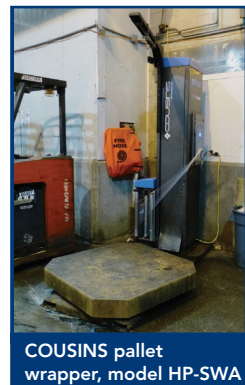




MARATHON compactor c/w bin, model RJ100-S0



COUSINS pallet wrapper, model HP-SWA



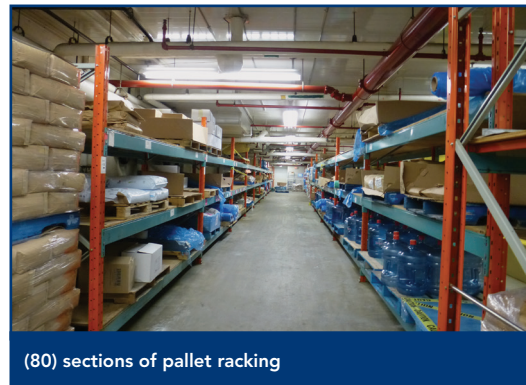
ITEC boot scrubber, type CA-23835



DUO SOAP soap dispensing station, (1 of 2)



ITEC touchless hand sink, (1 of 4)



(80) sections of pallet racking



MILLER TIG welder, model 180SD



TCL Asset Group Inc.

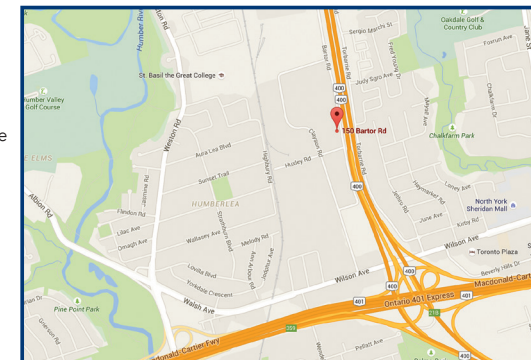
4610 Dufferin St., Suite 209
Toronto, ON M3H 5S4
Canada

TERMS AND CONDITIONS

This auction will be conducted and payable in U.S. FUNDS. A 25% deposit is payable prior to, or at time of purchase, and balance is payable by 12 noon the next day, before removal. All payments, (deposit and balance) for all goods must be paid for by Bank wire transfer, cash, certified cheque, or bank draft. A Buyer's Premium will be added to all purchases. All items are sold "as is, where is". The auction is subject to additions and deletions. Certain Assets may be subject to "Minimum Starting Bids" and if not sold by auction, they will be offered for sale by private negotiations immediately after auction. Complete terms and conditions of sale, etc., are available at inspection or on request. PLEASE NOTE: the auctioneer makes no warranty or guarantee, expressed or implied, as to the accuracy of the information here in contained. It is for the reason that the buyers should avail themselves of the opportunity to make inspection prior to the sale. Auctioneer's announcements day of sale take precedence over published information. PROXY BIDS: if you are unable to attend the auction, please call TCL to submit a proxy bid or bid online. E. & O.E.

DIRECTIONS FROM TORONTO PEARSON INTERNATIONAL AIRPORT (approx. 8 miles):

From Toronto Pearson International Airport take Highway 409 East to Highway 401 East (stay in Collector Lanes). Take Highway 401 East to Weston Road Exit (#357). Go North on Weston Road to Sheppard Avenue. Go East on Sheppard Avenue to Bartor Road. Go South on Bartor Road to auction site, 150 Bartor Road, Maple Leaf Foods Inc.



LIVE ONSITE AND WEBCAST 2-DAY PUBLIC AUCTION SALE



DAY 1:
"MAJOR PRODUCTION ASSETS" LIVE ONSITE AND WEBCAST
AUCTION DATE: TUESDAY, JULY 7TH, AT 10 A.M. (EDT)

DAY 2:
"SUPPORT ASSETS" ONLINE ONLY
AUCTION DATE: THURSDAY, JULY 9TH, AT 10 A.M. (EDT)

LOCATION: 150 BARTOR ROAD, TORONTO, ONTARIO, CANADA
(APPROX. 8 MILES EAST OF TORONTO INTERNATIONAL AIRPORT)

LIVE ONLINE INTERNET BIDDING AT:
BidSpotter.com
Live Interactive Auction Webcasts



4610 Dufferin St., Suite 209
Toronto, ON M3H 5S4 Canada
Tel: 416.736.1367
Toll Free: 1.877.825.2435
Email: tjacobs@managingyourassets.com

LIVE ONSITE AND WEBCAST 2-DAY PUBLIC AUCTION SALE

MAJOR SLICED MEAT PROCESSING & PACKAGING FACILITY

(Surplus To The Ongoing Needs of)

"MAPLE LEAF FOODS INC."



DAY 1 "MAJOR PRODUCTION ASSETS" LIVE ONSITE AND WEBCAST AUCTION DATE: TUESDAY, JULY 7TH, AT 10 A.M. (EDT)

DAY 2 "SUPPORT ASSETS" ONLINE ONLY AUCTION DATE: THURSDAY, JULY 9TH, AT 10 A.M. (EDT)

INSPECTION DATE: MONDAY, JULY 6TH, FROM 9 A.M. UNTIL 5 P.M., OR BY APPOINTMENT

LOCATION: 150 BARTOR ROAD, TORONTO, ONTARIO, CANADA (APPROX. 8 MILES EAST OF TORONTO INTERNATIONAL AIRPORT)

BOTH ONSITE AND ONLINE BIDDERS MUST REGISTER FOR THIS AUCTION 24 HOURS PRIOR TO THE SALE.

SALE CONDUCTED BY:



TCL Asset Group Inc.

ASSETS SUBJECT TO PRIOR SALE. STRICT REMOVAL REQUIREMENTS IN EFFECT.

E.&O.E.

DAY 2 - THURSDAY JULY 9TH AT 10 A.M. "SUPPORT ASSETS" TO BE SOLD ONLINE ONLY

S/S TABLES, CARTS, STAIRS, PLATFORMS, & CABINETS:

- large quantity of assorted s/s worktables, carts, stairs, work platforms, storage cabinets, storage shelving, etc.

PLANT SUPPORT EQUIPMENT:

- (1) COUSINS pallet wrapper model HP-SWA, "Semi-2-Auto"
- (1) MARATHON hydraulic trash compactor c/w container, model RJ100-S0
- (1) KARGO cardboard baler, 30" x 60"
- (1) ITEC s/s boot scrubber, type CA-23835
- (2) DUO SOAP s/s hand soap dispensing stations, c/w turnstiles

- (2) INLET CONTROL s/s hand sanitizer dispensing stations, c/w turnstiles
- (4) ITEC s/s touchless hand wash sinks, 2 to 6-station
- (2) compressed air receivers
- (1) commercial dehumidifier, model CD100
- steel clothes lockers
- industrial vacuum cleaners
- assorted freon refrigeration equipment
- assorted fiberglass step ladders

RACKING & MATERIAL HANDLING:

- (80) sections of pallet racking c/w plywood shelves
- (30) sections of galvanized cooler pallet racking
- (1) CONVEYERAIL 2-ton single-girder bridge crane c/w Budgit electric hoist
- (5) 1-ton electric chain hoists

MAINTENANCE SHOPS:

- (1) rotary surface grinder c/w magnetic chuck

- (1) MILLER TIG welder model Syncrowave 180SD
- (1) VAN NORMAN universal milling machine, model 16
- (1) RIDGID electric threader, model 300
- (2) oxygen-acetylene welding torch sets
- (4) drill presses
- assorted hydraulic press, bench grinders, chop saws, tools, work benches, etc.

STORES, SUPPLIES, & SPARE PARTS:

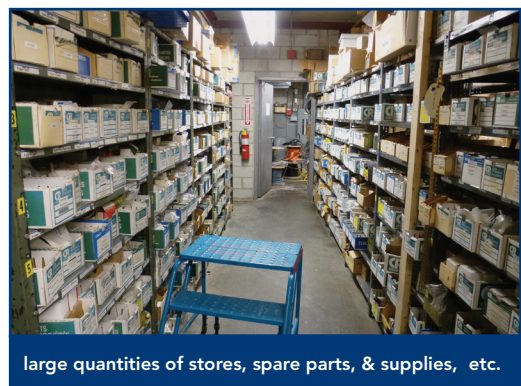
- large quantities of assorted spare machine parts, mechanical & electrical parts, motors, plant supplies, & various stores, etc.

OFFICE FURNITURE, ETC.:

- assorted boardroom furniture, office desks, chairs, file cabinets, etc.
- (1) QBD glass door reach-in refrigerator
- assorted microwave ovens, coffee makers, lunchroom equipment, etc.



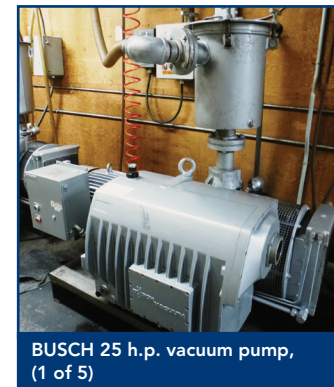
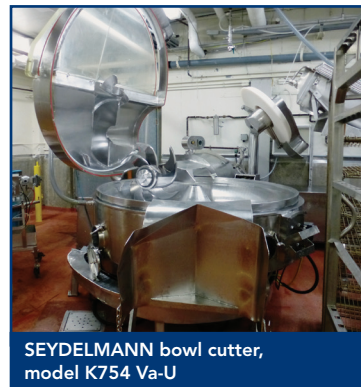
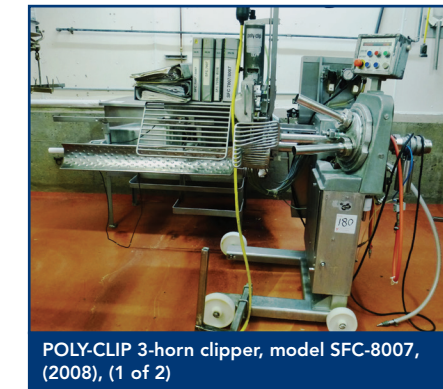
CONVEYERAIL 2-ton bridge crane



large quantities of stores, spare parts, & supplies, etc.



assorted office furniture, etc.



DAY 1 - TUESDAY JULY 7TH, AT 10 A.M. "MAJOR PRODUCTION ASSETS" TO BE SOLD LIVE ONSITE AND WEBCAST

VACUUM PACKAGING MACHINES:

- (1) **MULTIVAC** s/s thermoform-fill-seal vacuum packaging machine, model R535, 665 mm. bed width, (gripper chain moved in for 600 mm. film width), c/w gas flush, jumbo bottom unwind, tandem top unwind, **MR** bottom labeller model MR635-UP, empty pocket sensor for labeller, & inline film splicer, (2011)
- (1) **MULTIVAC** s/s thermoform-fill-seal vacuum packaging machine, model R245, 420 mm. bed width, c/w gas flush, **VIDEOJET** Dataflex+ thermal printer, & **MR** printer traverse unit model 293, (2009)
- (1) **MULTIVAC** s/s thermoform-fill-seal vacuum packaging machine, model R530, 420 mm. bed width, (1996), c/w jumbo bottom unwind, top forming unit w/ jumbo unwind, (2) **MR** bottom labellers model MR635-UP, (2008), **MR** top labeller model MR625-OP, (2008), & **VIDEOJET** Dataflex+ thermal printer
- (1) **MULTIVAC** thermoform-fill-seal vacuum packaging machine, model R5200, c/w gas flush **VIDEOJET** Dataflex+ thermal printer, & **MR** printer traverse unit model 293
- (1) **MULTIVAC** thermoform-fill-seal vacuum packaging machine, model R7000/PC, c/w gas flush
- (1) **DIXIE UNION** thermoform-fill-seal packaging machine, model DV-2700, c/w (2) **VIDEOJET** Dataflex+ thermal printers
- (1) **CRYOVAC** 8-station rotary vacuum packaging machine, model 8310-102
- assorted **MULTIVAC** die set tooling, with repeat lengths from 235 mm. up to 840 mm.
- SLICERS:**
- (1) **WEBER** s/s slicer, model 903SLC, c/w **WEBER** Weight-Master dual-lane checkweigher, vision system, & transport & reject conveyors, (2008)
- (1) **FORMAX** s/s slicer, model Shingle & Stack S180, c/w dual-lane checkweigher, & reject conveyor
- (1) **DIXIE UNION** s/s slicer, model Nova
- (1) **GRASSELLI** s/s slicer, model NSL400, (2008)

BLADE HONERS:

- (1) **WEBER** s/s blade honer, model SSG, (2008)
- (2) **FORMAX** s/s blade honers, model H180
- (1) **DIXIE UNION** s/s blade honer

EMULSIFIER:

- (1) **COZZINI** s/s variable speed emulsifier, model VS-901-MCS, c/w **ALLEN-BRADLEY** PanelView-1000 controller, & **COZZINI** s/s screw loader hopper, model CSL3000

BOWL CUTTER:

- (1) **SEYDELMANN** s/s vacuum bowl cutter, model K754 Va-U, c/w buggy dumper

MIXER/GRINDER:

- (1) **WOLFKING** s/s dual-shaft paddle mixer/grinder, model TSMG-1250/250, c/w 1250 liter cap. hopper, & 250 mm. grinder

GRINDERS:

- (1) **WEILER** 16" grinder, model 1612, c/w parts crane, & load hopper
- (1) **SIMO** Low-Boy s/s pump grinder, c/w s/s screw loader hopper

RIBBON BLENDERS:

- (3) s/s dual-shaft jacketed ribbon blenders, 66" W. x 106" L. x 42" D.
- (1) s/s dual-shaft vacuum ribbon blender, 44" W. x 72" L. x 32" D.

MESSAGE TUMBLERS:

- (1) **INJECT STAR** s/s vacuum message tumbler, 6' Diam. x 14' L., c/w load cells
- (3) **INJECT STAR** s/s vacuum message tumblers, 6' Diam. x 9' L., c/w load cells

INJECTOR:

- (1) **MEPSCO** s/s brine injector, model B1-244, c/w s/s rotary filter & tank

FLAKERS:

- (2) **HYDRA-FLAKER** s/s rotary frozen meat flakers

STUFFERS & CLIPPERS:

- (1) **TEEPAK** s/s T-Sizer II clipper, model 4, c/w **ALLEN-BRADLEY** PanelView-300 controller
- (2) **POLY-CLIP** s/s 3-horn single clippers, model SFC-8007, (2008, 2009)
- (1) **HANDTMANN** s/s vacuum stuffer, c/w buggy dumper, model VF300B
- (1) s/s pneumatic twin-head ham loaf filler

WHOLE MUSCLE STUFFING LINE:

EAMATECH whole muscle turkey stuffing & netting line, including:

- (1) **EAMATECH** s/s whole muscle stuffer, model VN202SSMW, c/w **RED LION** touchscreen control
- (1) **EAMATECH** s/s netting loader, model VN202NL
- (1) **EAMATECH** s/s 5' x 6' feed table on casters c/w pneumatic gate

MEAT BATCHING LINE:

Equipment Includes:

- (4) s/s bin dumpers, 4' x 4', 3000 lbs. cap., c/w hydraulic power pack
- (4) s/s infeed belt conveyors, 40" W. x 72" L.
- (1) s/s batching belt conveyor, 48" W. x 30' L., c/w load cells
- (1) s/s inclined transfer belt conveyor on casters, 30" W. x 25' L.
- s/s operators platforms
- central control panel, etc.

KSI CONTINUOUS HAM LOAF STEAM COOKING LINE:

Equipment Includes:

- (1) **KSI** s/s continuous steam cooker, 3-zone, model KSI-CG-8600, 16' W. x 60' L. x 9' H.
- (1) s/s I-beam & chain conveyor, 500' L., c/w (500) hooks & trolleys, 12" spacing
- (1) **ACUMEN** conveyor chain lubrication system
- (1) lot of s/s loaf slings
- (880) s/s ham loaf mold tins, 4" x 4" x 36" L.
- (1) **KSI** s/s brine chiller

- (1) 75 h.p. brine recirculation pump
- (1) brine chilling tunnel
- (1) s/s brine mixing tank
- (1) **KSI** s/s loaf mould washer, 24" W. x 40' L. x 9' H.
- (1) s/s automated loaf unloading system, etc.

KSI CONTINUOUS BOLOGNA STEAM COOKING AND BLAST CHILLING LINE:

Equipment Includes:

- (1) **KSI** s/s continuous steam cooker, 2-zone, model Inline Pacer, c/w **ALLEN BRADLEY** PanelView-1200 controller
- (1) 2-level s/s chain & I-beam conveyor, each level 704' L. c/w (704) hooks, 12" spacing
- (1) **ACUMEN** conveyor chain lubrication system
- (1) **KSI** s/s tunnel washer, 3' W. x 12' H. x 80' L.
- (1) **KSI** dryer system
- (2) wax tank hydraulic dipping stations
- (1) rinse water recirculation tank and transfer pump
- (1) s/s conveyerised tunnel washer
- (1) **COLDMATIC** blast chiller room, 50' x 80', etc.

BATCH SMOKE HOUSES, ETC.:

- (7) **SCHROTER** s/s gas-fired 4-door smoke houses, 10' x 10' x 10' H.
- (4) **GRIFFITHS** s/s gas-fired 2-door cook houses, 10' x 40' x 10' H.
- (2) **GRIFFITHS** s/s 2-door steam houses, 10' x 40' x 10' H.
- (2) **KSI** s/s steam houses, 6' x 25' x 8' H.
- assorted smoke generators, & accessory equipment, etc.

PRODUCT CONVEYING:

- dozens of s/s product belt conveyors, including: floor, inclined, & elevated, slicer discharge, packing, transfer, 45-degree, 90-degree, 180-degree, 2-level, wash-down drives, etc., etc., up to 45' long
- (4) s/s slicer discharge belt conveyor systems, 90-degree turn, 2-level over/under, 12' L. upper & 20' L. lower
- (2) s/s inclined screw conveyors, 12" Diam. x 12 ft. L.
- (1) **FRONTENAC** pedestal jib crane c/w **BUSCH** vacuum box lifter & gravity & powered roller conveyors, etc.

DUMPERS:

- (15) s/s hydraulic bin dumpers, & column buggy dumpers

HOPPERS, & SILOS:

- (3) s/s holding silos, 5' Diam. x 8' H., c/w **WAUKESHA** s/s P.D. pumps
- (1) **COZZINI** s/s holding silo, 5' x 5' x 8' H., c/w **WAUKESHA** s/s P.D. pump
- (3) s/s screw loader hoppers, incl. load cells, & P.D. pump, etc.

METAL DETECTORS:

- (4) s/s metal detectors, c/w belt conveyors, **FORTRESS** model Phantom, & **LOMA** model IQ2
- (4) s/s pipeline metal detectors, **FORTRESS** model Phantom, & **LOMA** model IQ2, etc.

BRINE MAKE-UP & STORAGE:

- (1) s/s brine mixing tank, 5' Diam. x 5' H., c/w bridge-mounted s/s **ROTOSOLVER** mixer & s/s centrifugal pump
- (3) polyethylene brine storage tanks, 4' Diam. x 7' H., c/w FlatPlat heat exchangers, & **WAUKESHA** s/s centrifugal pumps
- (2) 2-compartment s/s brine storage tanks 4' x 9' x 5' H., each c/w (2) propeller mixers, (2) tube heat exchangers, & s/s centrifugal pump
- (1) s/s tank 2' x 8' x 3' D., c/w **GRACO** s/s diaphragm pump

AUXILIARY PRODUCTION EQUIPMENT:

- (5) **BUSCH** vacuum pumps, 20 & 25 h.p
- (3) refrigeration & dehumidification units, etc., for (3) **TRAVAGLINI** drying rooms
- (1) **CRYOVAC** s/s steam shrink tunnel, model 6570BFT
- (1) PD4 pressurized central dosing system, c/w (7) **ALLEN-BRADLEY** PanelView Plus-600 controller stations & central control cabinet
- (1) **GREYDON** Bagaire s/s bagging machine
- (1) walk-in cooler, 10' W. x 12' x 8' H.
- (1) **HOBART** meat grinder, model 4812
- (1) **STEPHAN** food processor model UM-5, etc.

PRODUCT VATS, BUGGIES, & TRUCKS:

- (70) **VEMAG** s/s buggies, 200 liter cap.
- (25) **VEMAG** s/s buggies, 300 liter cap.
- (300) assorted s/s smoke trucks
- hundreds of s/s smokesticks c/w carts
- (60) assorted s/s vats, 4' x 3' x 3', etc.

SCALES, LABELLERS, & PRINTERS:

- (6) 4' x 6' s/s floor platform scales c/w digital indicators
- (1) **PACK LEADER** s/s top labeller, model PL-211, c/w belt conveyor
- (4) **CARLISLE** s/s touchscreen workstations, c/w **DATAMAX** label printers, & s/s inline digital motion scales
- (3) **CARLISLE** s/s touchscreen workstations c/w **DATAMAX** label printers
- (1) **VANDE BERG** s/s inline motion scale, model CS-72X107M
- (1) 2008 **LINX** ink jet printer, model 6900 P690
- (2) 454 kg. & 500 kg. calibration weights, etc.

CASE TAPERS:

- (7) **WEXXAR/BELCOR** case tapers, model BEL150SS, & BEL150
- (1) **WEXXAR** Fast Pack case erector, model BEL505

LAB:

- (1) **CEM** Smart System-5 analyzer, model 907875
- (1) **ELEMENTAR** Vario Max CN macro elemental analyzer
- (1) **THERMO SCIENTIFIC** Barnstead Mega-Pure still, type MP-3A, model 6749, (2011)
- (1) **AMSCO** s/s laboratory autoclave c/w **SIEMENS** Simatic touchscreen control
- (1) **FISHER SCIENTIFIC** low temperature incubator
- (1) **THERMO ELECTRON** Precision incubator
- (2) **BLUE-M** Stabil-Therm incubators
- (1) **THERMOLYNE** bench furnace, model 1500
- (1) **NORLAB** 6 ft. fume hood model 20BA c/w cabinet base
- assorted lab counters & cabinets, etc.