

basic specifications

1300-W



Walking Dragline

WEIGHTS:

	Boom length, ft.	235	260	285	302	325
Net weight*, domestic, approx. (with bucket + 50' base) lbs.		3,390,000	3,420,000	3,440,000	3,445,000	3,650,000
Working weight, approx. (with bucket) lbs.		3,915,000	3,970,000	4,015,000	4,045,000	4,275,000
Ballast weight (furnished by purchaser) lbs.		525,000	550,000	575,000	600,000	625,000

*Add 200,000# for 55' dia. base.
Add 35,000# for blocking when estimating domestic freight.

BASE:

Outside diameter, ft.-in.	50-0	55-0
Bearing area, sq. ft.	1,965	2,375
Circle rail diameter, ft.-in.	34-0	
Rollers, quantity	116	
average diameter, in.	8 ⁵ / ₈	
Swing rack, pitch diameter, ft.-in.	24-3 ¹ / ₄	

WALKING MOUNTING:

Shoe, width and length, ft.	9x54	10x56
combined bearing area, sq. ft.	972	1,120
Overall width over shoes, ft.-in.	70	77
Cam, diameter, ft.-in.	6-0	
Length of step, approx. ft.-in.	7-4	
Walking speed, approx. m.p.h.	0.17	

REVOLVING FRAME:

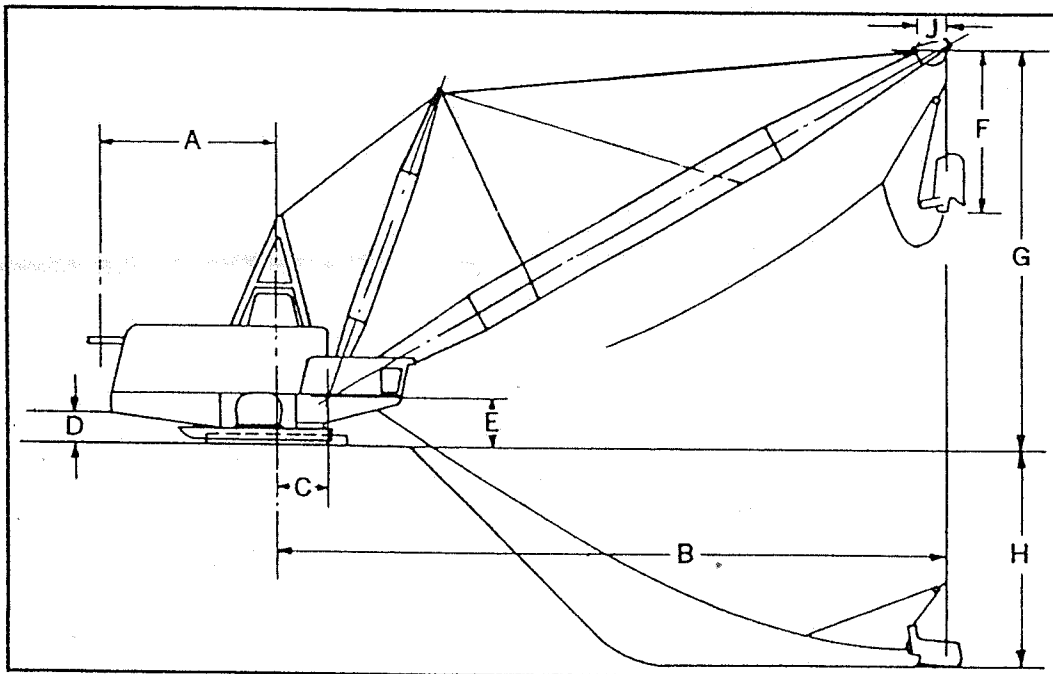
Upper machinery frame, width x length, ft.	35x71
Girder depth, upper frame, in.	50
Girder depth, subframe, ft.-in.	8-0

ELECTRICAL EQUIPMENT:

Hoist motors (blown)	two 625/ 1300 h.p.
Drag motors (blown)	two 625/ 1300 h.p.
Swing motors (blown)	three 300/ 640 h.p.
Walking motors (blown)	two 300/ 640 h.p.

All above motors rated at 75° continuous and at 230/475 V.
MG Set Drives: two 1750 h.p. Synch. mtrs. . . 3/60/6900V.

WORKING DIMENSIONS



A	Clearance radius, ft.-in.	57:0
B	Operating radius	Read below
C	Boom foot radius, ft.-in.	17-2 ¹ / ₂
D	Clearance height, ft.-in.	9-0
E	Boom foot height, ft.-in.	17-2
F	Dumping clearance*	Read below
G	Boom point height	Read below
H	Digging depth	Read below
J	Point sheave pitch diameter, in.	85 ¹ / ₄

*Includes allowance for bucket, hoist chains, pick-up link and 10' clearance at hoist sheaves.

NOTE:

- (1) Rope diameters may change with final geometry.
- (2) Ballast requirements may vary pending final stability.
- (3) Bucyrus-Erie Company reserves the right to make changes in specifications or design which in its opinion are an improvement or are necessary because of unavailability of materials, without incurring any liability to make such changes on machines previously built.

Boom Length	B Operating Radius	Boom Length	Maximum Suspended Load (lbs.)	G Boom Pt. Height	G-F Approximate Dumping Height	H Digging Depth	Drag			Hoist		
							Drum Diam.	Rope		Drum Diam.	Rope	
								No.	Diam.		No.	Diam.
235'	215' 224'	34° 30°	225,000 220,000	148' 134'	88' 74'	135' 150'	92" 92"	2 2	3" 3"	92" 92"	2 2	3" 3"
260'	224' 245'	38° 30°	220,000 205,000	177' 147'	117' 87'	105' 150'	92" 92"	2 2	3" 2 ⁷ / ₈ "	92" 92"	2 2	3" 2 ⁷ / ₈ "
285'	245' 267'	38° 30°	195,000 190,000	192' 160'	138' 106'	130' 180'	102" 102"	2 2	2 ⁷ / ₈ " 2 ³ / ₄ "	102" 102"	2 2	2 ⁷ / ₈ " 2 ³ / ₄ "
302'	259' 282'*	38° 30°	175,000 160,000	203' 168'	149' 114'	137' 180'	102" 102"	2 2	2 ³ / ₄ " 2 ⁵ / ₈ "	102" 102"	2 2	2 ³ / ₄ " 2 ⁵ / ₈ "
325'	277'* 302'*	38° 30°	160,000 145,000	219' 180'	169' 130'	135' 190'	102" 102"	2 2	2 ⁵ / ₈ " 2 ¹ / ₂ "	102" 102"	2 2	2 ⁵ / ₈ " 2 ¹ / ₂ "

Specification 1300-W 0975 *Will require reduced power.

1300W BUCYRUS ERIE WALKING DRAGLINE BASIC SPECIFICATIONS

WEIGHTS: NET WEIGHT: (APPROX. WITH BUCKET) 3,700,000 LBS.
 WORKING WEIGHT: (APPROX. WITH BUCKET) 4,450,000 LBS.
 BALLAST WEIGHT: 750,000 LBS.
 RATED SUSPENDED LOAD: 220,000 LBS.

BOOM LENGTH: 260 FEET
 BOOM ANGLE: 35 DEG.

MAST LENGTH: 129 FEET
 MAST ANGLE: 78 DEG.

BUCKET SIZE: 46 CUBIC YARD

TUB DIAMETER: 55 FEET
 CIRCLE RAIL DIAMETER 34'1-1/4" FEET
 NUMBER OF ROLLERS 116 AVERAGE DIAMETER 8-5/8 INCH'S
 SHOE WIDTH 10 FEET LENGTH 56 FEET
 LENGTH OF STEP 7 FEET 2 INCH'S WALKING SPEED 0.15 MPH.

ROPE SIZE: HOIST LH 613 FEET 3" DIAMETER DRAG LH 355 FEET 3" DIAMETER
 RH 601 FEET 3" DIAMETER RH 343 FEET 3" DIAMETER

DUMP ROPE: 54 FEET 2" DIAMETER

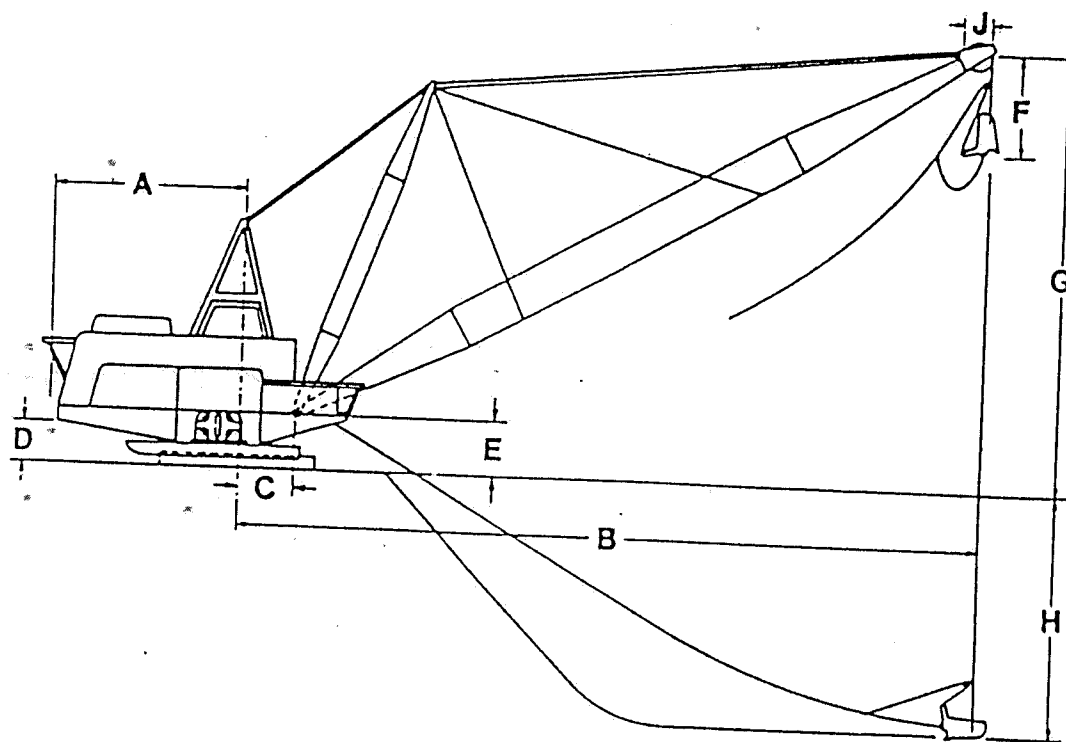
(8) EACH LOWER MAIN SUSPENSION CABLES 82-3/4 FEET X 3" DIAMETER

(4) EACH UPPER MAIN SUSPENSION CABLES 166-6 FEET X 2-1/2" DIAMETER

(2) EACH UPPER INTERMEDIATE CABLES 75'-2-5/8" FEET X 1-3/4" DIAMETER

(2) LOWER INTERMEDIATE CABLES 110'-9.5" FEET X 1-3/4" DIAMETER

ELECTRICAL EQUIPMENT: MG SETS TWO (2) 1750 HP SYNCH. MOTORS (6900V)
 HOIST TWO (2) 1300 HP. MOTORS (475V)
 DRAG TWO (2) 1300 HP. MOTORS (475V)
 SWING THREE (3) 675 HP. MOTORS (475V)
 WALKING TWO (2) 675 HP. MOTORS (475V)



WORKING RANGES AND DIMENSIONS
 (A) CLEARANCE RADIUS FT-IN 57-3
 (B) OPERATING RADIUS 230 FEET
 (C) BOOM FOOT RADIUS FT-IN 17-2-1/2
 (D) CLEARANCE HEIGHT FT-IN 9-0
 (E) BOOM FOOT HEIGHT FT-IN 17-2
 (F) DUMP CLEARANCE 122 FEET
 (G) BOOM POINT HEIGHT 177 FEET
 (H) MAXIMUM DIGGING DEPTH 155 FEET