

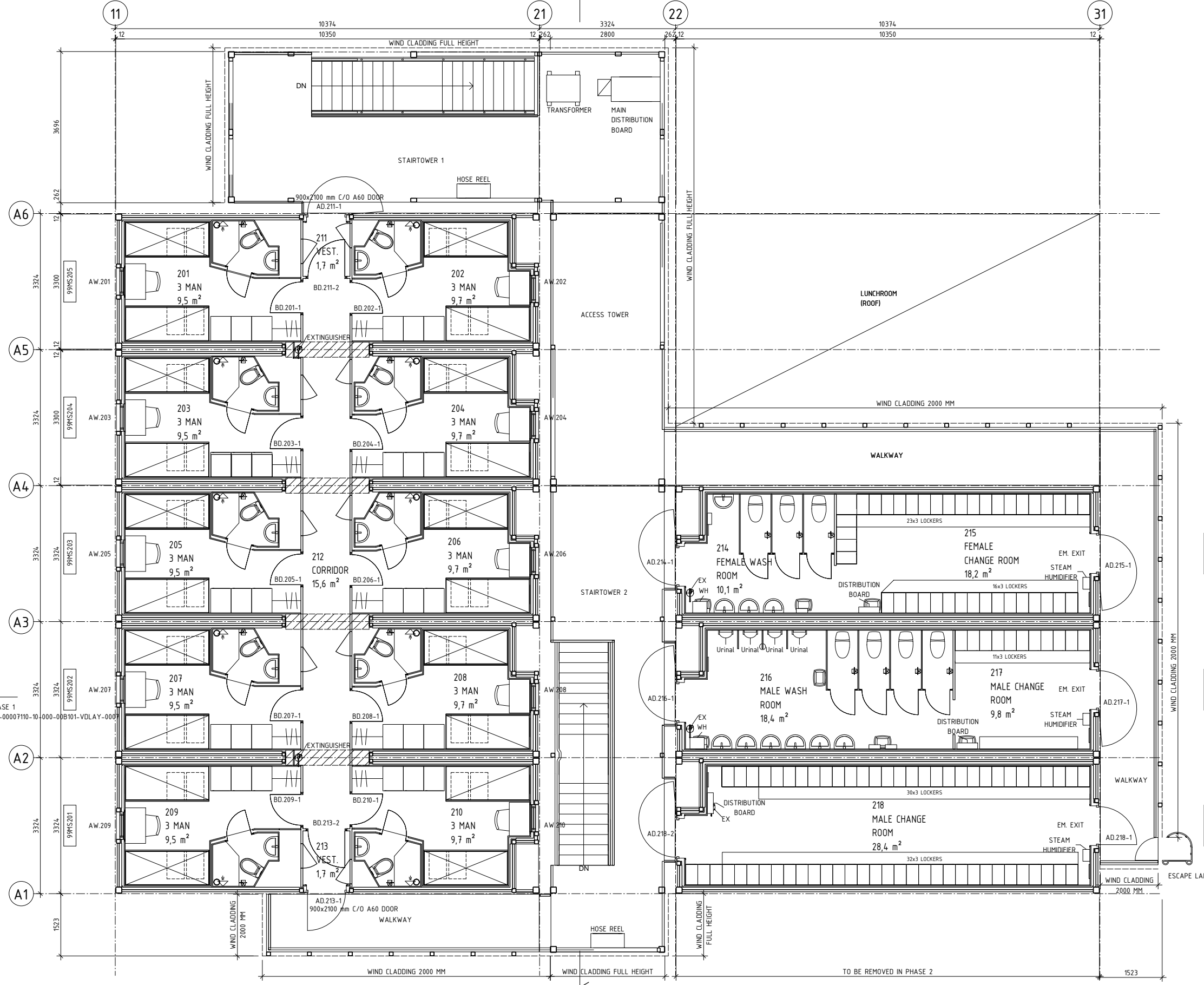
A-A PHASE 1
CAHE-YE-00007110-10-000-00B101-VLAY-0007

- LEGEND**
- 99MSXXX MODULE NUMBER
 - HOOK UP ZONE
 - AD.XXX-X A60 DOOR NUMBER
 - BD.XXX-X B15 DOOR NUMBER
 - AW.XXX-X A60 WINDOW NUMBER
 - DB DISTRIBUTION BOARD
 - EX EXTINGUISHER
 - FR FRIDGE
 - RP REMOVABLE PANEL
 - WH WATER HEATER

NOTES

ALL DIMENSIONS ARE IN MM
ALL LEVELS ARE IN M

GA SECTIONS SEE DRAWINGS:
CAHE-YE-00007110-10-000-00B101-VLAY-0007 --0008
GA ELEVATIONS SEE DRAWINGS:
CAHE-YE-00007110-10-000-00B105-VLAY-0001 --0005



A-A PHASE 1
CAHE-YE-00007110-10-000-00B101-VLAY-0007

CAHE-TLQ289200A	
CAHE-TLQ289200B	
CAHE-TLQ289200C	
CAHE-TLQ289200D	CAHE-TLQ289203
CAHE-TLQ289200E	CAHE-TLQ289204
CAHE-TLQ289200F	CAHE-TLQ289205
CAHE-TLQ289200G	
CAHE-TLQ289200H	
CAHE-TLQ289200I	
	CAHE-TLQ289208

C:\Windows\system32\config\systemprofile\Documents\5161_C-Model_C_segus.rvt

REVIEW STAMP

- REVIEWED AND ACCEPTED. MANUFACTURE MAY PROCEED
- REVIEWED AND ACCEPTED AS MARKED. REVISE & RE-SUBMIT. MANUFACTURE MAY PROCEED.
- REVISED AS MARKED & RE-SUBMIT. MANUFACTURE SHALL NOT PROCEED.
- REVIEW NOT REQUIRED. FOR INFORMATION ONLY.

Name: _____ Date: _____

WorleyParsons
resources & energy

Acceptance in any of these categories in no way relieves the Contractor/Supplier of its responsibility for the due and proper performance of the Works in accordance with the Contract/Purchase Order.

Rev. No.	Rev. By.	Check By.	Approved By.	Approval Date	Comments
3	GBE	JOL	JHA	29-MAY-2015	As Built
2	GBE	JOL	JHA	31-MAR-2015	See attached comments
1	GBE	JOL	JHA	22-AUG-2014	Issued for Approval
0	GBE	ABR	JHA	13-JUN-2014	Issued for Comments / Approval

APPLY EMTUNGA
SE-534 91 Vara, Sweden
www.emtunga.com

EM- Status: **AS BUILT**

EM- Document Number: 5161-000068

EM- Rev: 04

Client- Status: **AS BUILT**

Projection:

Sheet size: A1

Scale: 1:50

Discipline	C	Worley Parsons
System	2	HEBRON TLQ - PHASE 1
Level	-	
Area	-	
Module	-	
Project no.	5161	GA LAYOUT LEVEL 2 TLQ + LUNCHROOM/CHANGEROOM
Client-Document no.	CAHE-YE-00007110-10-000-00B101-VLAY-0002	
Client-Rev.	3	